

# Global analysis of B cell selection using an immunoglobulin light chain–mediated model of autoreactivity

Sarah F. Andrews,<sup>1,2</sup> Qingzhao Zhang,<sup>5</sup> Samuel Lim,<sup>1,2</sup> Lie Li,<sup>1,2</sup> Jane-Hwei Lee,<sup>1,2</sup> Nai-Ying Zheng,<sup>1,2</sup> Min Huang,<sup>1,2</sup> William M. Taylor,<sup>1,2</sup> A. Darise Farris,<sup>6</sup> Dongyao Ni,<sup>2,3</sup> Wenzhao Meng,<sup>7</sup> Eline T. Luning Prak,<sup>7</sup> and Patrick C. Wilson<sup>1,2,4</sup>

<sup>1</sup>Section of Rheumatology, Department of Medicine; <sup>2</sup>Gwen Knapp Center for Lupus and Immunology Research; <sup>3</sup>Molecular Pathogenesis and Molecular Medicine Graduate Program, Department of Pathology; and <sup>4</sup>Committee on Immunology; University of Chicago, Chicago, IL 60637

<sup>5</sup>Immunobiology and Cancer Research Program and <sup>6</sup>Arthritis and Clinical Immunology Research Program, Oklahoma Medical Research Foundation, Oklahoma City, OK 73104

<sup>7</sup>Department of Pathology and Laboratory Medicine, Perelman School of Medicine, University of Pennsylvania, Philadelphia, PA 19104

**The important subtleties of B cell tolerance are best understood in a diverse immunoglobulin (Ig) repertoire context encoding a full spectrum of autoreactivity. To achieve this, we used mice expressing Igκ transgenes that confer varying degrees of autoreactivity within a diverse heavy chain (HC) repertoire. These transgenes, coupled with a biomarker to identify receptor–edited cells and combined with expression cloning of B cell receptors, allowed us to analyze tolerance throughout B cell development. We found that both the nature of the autoantigen and the Ig HC versus light chain (LC) contribution to autoreactivity dictate the developmental stage and mechanism of tolerance. Furthermore, although selection begins in the bone marrow, over one third of primary tolerance occurs in the periphery at the late transitional developmental stage. Notably, we demonstrate that the LC has profound effects on tolerance and can lead to exacerbated autoantibody production.**

## CORRESPONDENCE

Patrick C. Wilson:  
wilsonp@uchicago.edu

Abbreviations used: AUC, area under the curve; BCR, B cell receptor; dsDNA, double-stranded DNA; FM, follicular mature; HC, heavy chain; IMF, immunofluorescence; LC, light chain; RS, recombining sequence.

Random rearrangement of the heavy chain (HC) and light chain (LC) genes encoding the B cell receptor (BCR) creates a diverse repertoire capable of recognizing a wide array of antigens but at the cost of generating self-reactive specificities that can predispose for widespread autoimmune disease. An important stage for removal of self-reactive B cells from the developing repertoire, termed primary tolerance, occurs when the BCR is first expressed on the cell surface at the immature stage of development in the BM. At this stage, receptor editing, or secondary rearrangement of Ig genes to alter the specificity of an autoreactive BCR (Gay et al., 1993; Radic et al., 1993; Tiegs et al., 1993), is the default mechanism for the removal of autoreactive B cells (Melamed and Nemazee, 1997; Halverson et al., 2004). It is estimated that one quarter of all mature B cells that enter peripheral lymphoid organs such as the spleen

have been subjected to receptor editing (Casellas et al., 2001). If receptor editing proves unsuccessful at reducing BCR self-reactivity, immature B cells are removed by clonal deletion (Nossal, 1983; Nemazee and Bürki, 1989) or are rendered anergic, particularly if they react to soluble or low avidity self-antigens (Goodnow et al., 1988).

Censoring of the B cell repertoire also occurs in peripheral B cells. BCR transgenic B cells undergo deletion when they encounter their cognate antigen expressed solely in peripheral tissues (Russell et al., 1991; Lang et al., 1997; Ait-Azzouzene et al., 2006; Duong et al., 2010; Ota et al., 2010). The acute sensitivity of transitional B cells to undergo apoptosis upon BCR engagement and the restriction of the BCR repertoire between immature B cells and the

S.F. Andrews and Q. Zhang contributed equally to this paper.

© 2013 Andrews et al. This article is distributed under the terms of an Attribution–Noncommercial–Share Alike–No Mirror Sites license for the first six months after the publication date (see <http://www.rupress.org/terms>). After six months it is available under a Creative Commons License (Attribution–Noncommercial–Share Alike 3.0 Unported license, as described at <http://creativecommons.org/licenses/by-nc-sa/3.0/>).

splenic mature naive pool further demonstrate that selection also occurs after B cells exit the BM (Gu et al., 1991; Carsetti et al., 1995; Norvell et al., 1995; Levine et al., 2000; Allman et al., 2001). A study in humans has also demonstrated that the relative number of self-reactive B cells decreases from ~40% to 20% as newly formed immature B cells transition into the naive mature B cell compartment (Wardemann et al., 2003).

Much of what we know about central and peripheral B cell tolerance mechanisms has been gleaned from studying the development of self-reactive B cells expressing a transgenic HC or HC/LC pair that recognize a well-defined self-antigen (Shlomchik, 2008). These studies have defined many of the fundamental concepts of tolerance, but understanding the role of each tolerance mechanism and the developmental stage where tolerance occurs in a more physiological setting has been challenging. A major goal of this study, therefore, was to quantify the relative contributions of central versus peripheral tolerance mechanisms in honing the mature repertoire in the context of a highly diverse polyclonal B cell repertoire. To do so, we used mice containing HCs generated by endogenous rearrangement of the HC loci with a  $\kappa$  LC knockin transgene, which allows us to identify receptor-edited cells. To characterize editing and selection for a wide spectrum of self-reactivity, we studied two different  $\kappa$  LC knockin transgenic mice. First, we used the prototypical anti-DNA-associated LC V $\kappa$ 4-J $\kappa$ 4 (V $\kappa$ 4; Shlomchik et al., 1987; Prak and Weigert, 1995), in which editing was discovered by the observation that continued VJ recombination efficiently replaced this LC to reduce the anti-DNA reactivity of the 3H9 HC (Gay et al., 1993; Radic et al., 1993; Chen et al., 1997). Second, we used the anti-HEL V $\kappa$ 5-45/J $\kappa$ 2 LC ( $\alpha$ Hel $\kappa$ ) as an “innocuous” LC (Casellas et al., 2001). When paired with randomly rearranged HCs, the V $\kappa$ 4-containing BCRs are predicted to have a propensity for autoreactivity, and tolerance mechanisms such as receptor editing or deletion will be induced. Conversely, the  $\alpha$ Hel $\kappa$  LC is not predicted to contribute to and may indeed lessen the autoreactive nature of a BCR and so should only rarely be edited or counter-selected when paired with random HCs.

Using these two different LC transgenic mice, we determined the frequency of edited cells and prevalence of self-reactive B cells at various B cell developmental stages on both a wild-type (C57BL/6 [B6]) and an autoimmune background (MRL/*lpr*). This approach also allows the rapid assessment of mAb autoreactivity from random VH-D-JH rearrangements paired with the fixed transgenic LC or endogenous LCs rearranged as a consequence of receptor editing. With this system, we show that the V $\kappa$ 4 LC-expressing cells are more self-reactive, leading to extensive editing to other  $\kappa$  genes during B cell development in the BM. Conversely, the  $\alpha$ Hel $\kappa$  LC is typically not self-reactive when paired with random HCs, resulting in a low frequency of edited cells at the immature B cell stage. Surprisingly, once the B cells developed from the transitional stages to maturity in the periphery, attrition of unedited cells doubled the frequency of cells that had undergone receptor editing in the mature B cell repertoire. This was abrogated in MRL/*lpr* mice, correlating with accelerated

development of IgG double-stranded DNA (dsDNA) antibodies in V $\kappa$ 4 LC transgenic mice. When coupled with other known mechanisms such as central deletion and anergy, we conclude that the impact of receptor editing on the mature B cell repertoire is greatly amplified by peripheral selection events that occur after the molecular process of receptor editing has ceased. As a whole, the data presented demonstrate that the precise stage and mechanism of self-tolerance induced for any particular self-reactive B cell can be quite variable and is dictated by both the type of autoantigen bound and by the relative contribution of the HC or LC to BCR autoreactivity.

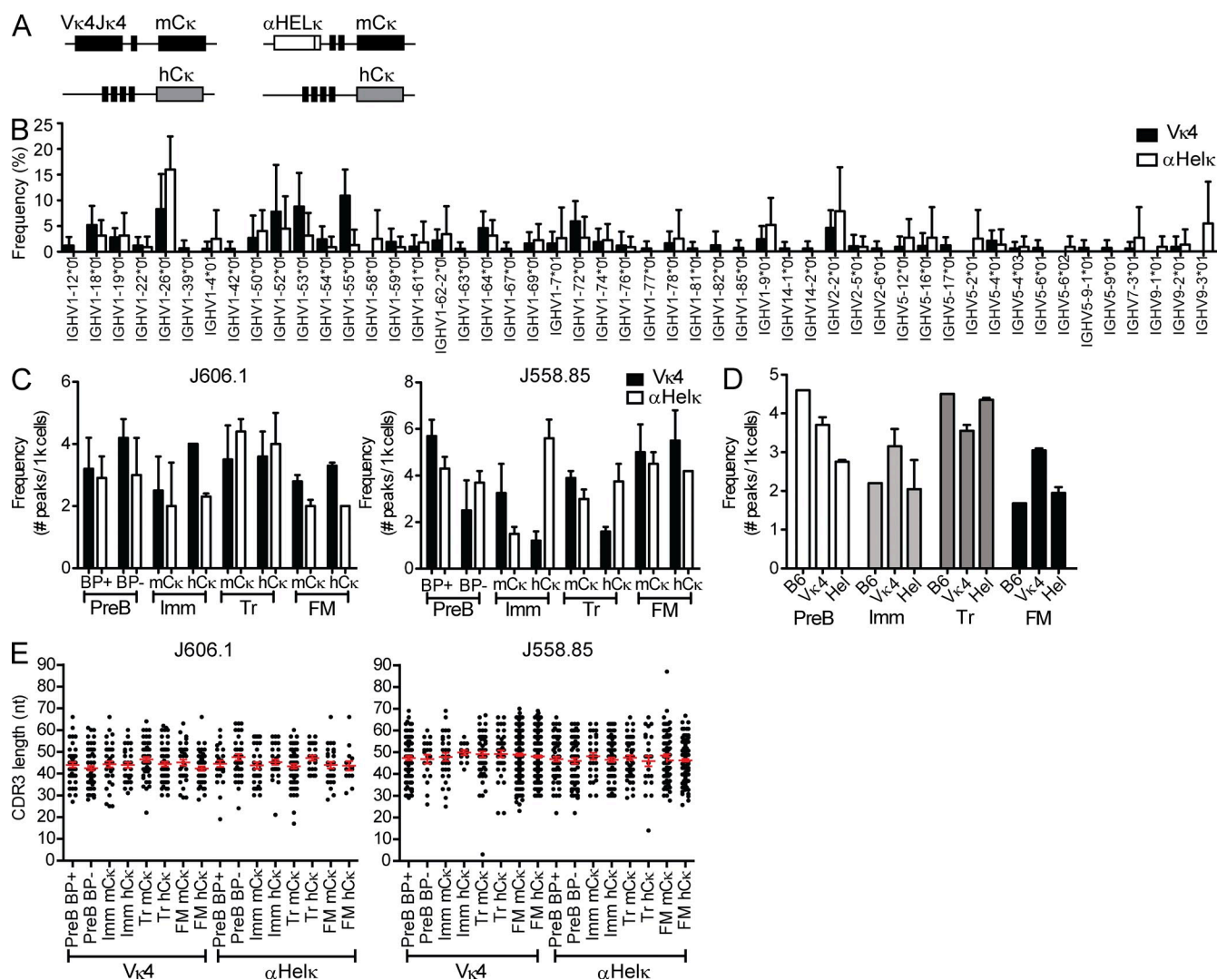
## RESULTS

### Tracking B cell tolerance mechanisms in the context of a diverse polyclonal BCR repertoire

We established a mouse model in which fixed Ig $\kappa$  LC transgenes influence the preselection autoreactivity of the B cell repertoire when paired with a polyclonal repertoire of endogenously rearranged HCs. To do so, we used mice containing a predicted “innocuous”  $\alpha$ Hel $\kappa$  LC and “self-reactive prone” V $\kappa$ 4 LC knocked into the variable region of one  $\kappa$  allele. To monitor receptor editing, these LC transgenic mice were crossed with mice containing the human  $\kappa$  constant (hC $\kappa$ ) region knocked in downstream of unrearranged variable region genes (Ig $\kappa^h$ ) of the endogenous  $\kappa$  locus (Fig. 1 A). In these Ig $\kappa^{\alpha\text{hel}/h}$  or Ig $\kappa^{\text{V}\kappa4/h}$  mice, upon receptor editing, the hC $\kappa$  allele undergoes VJ rearrangement and pairs with the endogenous HCs (Casellas et al., 2001, 2007). Thus, we can track the frequency of receptor-edited B cells and their subsequent selection by flow cytometry for mouse versus human Ig $\kappa$  and/or by RT-PCR and sequence analysis of the V $\kappa$ J $\kappa$  region of the expressed LC.

We first verified that the fixed transgenic LC in these mice is not significantly skewing or restricting the HC repertoire. Comparison of the HCVH gene usage in the splenic mature compartment showed similar and diverse usage of VH genes in Ig $\kappa^{\alpha\text{hel}/h}$  or Ig $\kappa^{\text{V}\kappa4/h}$  mice in both edited and unedited B cells (Fig. 1 B and not depicted). Likewise, spectratyping of VH genes J558.85 and J606.1 in sorted B cell subsets showed a varied, polyclonal HC repertoire at all stages of development, comparable with a wild-type B6 mouse for both HCs (Fig. 1, C–E). This was true in cells that expressed the transgenic LC or endogenous LC. J558.85 was specifically chosen because its germline sequence is similar to the 3H9 HC and has been found in other autoantibodies in its unmutated form (Shlomchik et al., 1990). Conversely, J606.1 is normally abundantly rearranged (Meng et al., 2011) and has not been described among autoantibodies to our knowledge. Collectively, these results suggest that alterations in LC rearrangement between Ig $\kappa^{\alpha\text{hel}/h}$  or Ig $\kappa^{\text{V}\kappa4/h}$  mice are not caused by severe limitations in HC/LC pairing or strongly altered HC selection at the pro-B to pre-B transition.

Next, we confirmed that antibodies encoded by randomly rearranged VH genes paired with the V $\kappa$ 4 LC were indeed more self-reactive than those encoded by the  $\alpha$ Hel $\kappa$  LC. For this, we directly compared the self-reactivity of the BCR



**Figure 1. VH gene diversity in LC transgenic mice.** (A) Diagram of  $\kappa$  loci in  $Ig\kappa^{V\kappa4/h}$  and  $Ig\kappa^{\alphaHEL\kappa/h}$  knockin mice. (B) VH gene usage of edited and unedited AA<sup>4-</sup> mature cells sorted from  $Ig\kappa^{V\kappa4/h}$  and  $Ig\kappa^{\alphaHEL\kappa/h}$  mice. Analysis of 141 HC sequences from five  $Ig\kappa^{V\kappa4/h}$  mice and 96 HC sequences from five  $Ig\kappa^{\alphaHEL\kappa/h}$  mice is shown. ANOVA indicated no significant difference between the VH gene repertoires of  $V\kappa4$  and  $\alphaHEL\kappa$  mice. Error bars indicate SD of the mean. (C) Frequencies of  $V_H$ - $J_H2$  rearrangements. B cells from 12-wk-old mice were sorted into different fractions based on developmental stage (as specified in Fig. S1) and LC cell surface phenotype (where applicable). Genomic DNA from each cell fraction was analyzed by CDR3 spectratyping, and the numbers of peaks were counted per 1,000 cells for  $V_H$  J606.1- $J_H2$  (left) and J558.85- $J_H2$  (right). Mean VH peak numbers with  $\pm$  SEM are shown for BM B220<sup>+</sup>CD43<sup>-</sup>IgM<sup>-</sup>Pre-B (BP<sup>+</sup> vs. BP<sup>-</sup>) and mC $\kappa$  versus hC $\kappa$  immature (Imm), splenic transitional (Tr), and FM B cells from  $Ig\kappa^{V\kappa4/h}$  (closed bars) and  $Ig\kappa^{\alphaHEL\kappa/h}$  (open bars) mice. Shown are data from cells sorted from two individual mice for each genotype in two independent experiments. (D) Similar frequencies of  $V_H$  J606.1- $J_H2$  rearrangements in B6,  $Ig\kappa^{V\kappa4/h}$ , and  $Ig\kappa^{\alphaHEL\kappa/h}$ . VH peak number analysis in pre-B, Imm, Tr, and FM of B6,  $Ig\kappa^{V\kappa4/h}$ , and  $Ig\kappa^{\alphaHEL\kappa/h}$  mice is shown. The same data for  $Ig\kappa^{V\kappa4/h}$  and  $Ig\kappa^{\alphaHEL\kappa/h}$  mice from panel B are replotted here, but rearrangements per 1,000 sorted B cells were calculated by combining both the sorted mC $\kappa$  and hC $\kappa$  populations to facilitate comparison with wild-type B6 mice (which have two mouse  $\kappa$  alleles). Plotted are the frequencies of  $V_H$  J606.1- $J_H2$  with mean  $\pm$  SEM in both  $Ig\kappa^{V\kappa4/h}$  and  $Ig\kappa^{\alphaHEL\kappa/h}$  mice. No SEM is given for B6 because the B6 analysis was performed on two pooled 12-wk-old mice. (E)  $V_H$  CDR3 length distribution comparison in B subsets of  $Ig\kappa^{V\kappa4/h}$  and  $Ig\kappa^{\alphaHEL\kappa/h}$  mice. The CDR3 lengths (nt) of  $V_H$ - $J_H2$  rearrangements in genomic DNA of sorted cell populations were calculated based on CDR3 spectratyping performed in B and C. Each dot represents a single rearrangement. Error bars indicate SEM.

composed of the  $V\kappa4$  versus the  $\alphaHEL\kappa$  LC transgene paired with 43 VH genes that were isolated from single-cell sorted mature (AA<sup>4-</sup>) B cells from the spleens of  $Ig\kappa^{\alphaHEL\kappa/h}$  and  $Ig\kappa^{V\kappa4/h}$  mice. VH genes from both types of mice were sequenced and cloned into expression vectors and cotransfected with either transgenic LC into 293A cells to express recombinant mAbs.

The mAbs were expressed as chimeric antibodies using identical human IgG1/C $\kappa$  constant regions to normalize detection in all assays. There was no clonal relation between any two individual B cells (not depicted). The 43 pairs of  $VH/V\kappa4$  and  $VH/\alphaHEL\kappa$  encoded mAbs were tested side by side for their ability to bind HEP-2 cells either by ELISA or immunofluorescence (IMF).

When VH genes isolated from either mouse strain were paired with the V $\kappa$ 4 LC, in all but two cases, the resulting antibody was more HEp-2 reactive by ELISA or IMF than when paired with the  $\alpha$ HEL $\kappa$  LC (Fig. 2, A–C). As we are testing antibodies with mouse-derived variable regions on a human cell line, we further confirmed that we are measuring reactivity to self and not foreign antigen by testing the ability of the antibodies to bind 3T3 mouse fibroblast cells. As with HEp-2 cells, binding of VH/V $\kappa$ 4 antibodies to 3T3 cells was higher than VH/ $\alpha$ HEL $\kappa$  antibodies by IMF (Fig. 2 D). None of the antibodies bound better to HEp-2 cells compared with 3T3 cells, although several of the VH/V $\kappa$ 4 antibodies had more intensive staining on 3T3 cells than HEp-2 cells. Whether this is caused by differences in the species from which the cell is derived or the cell fixation process is unclear. We went on further to measure by ELISA the reactivity of antibody pairs to the common self-antigen, dsDNA. Antibody binding to dsDNA mirrored reactivity to LPS and insulin (not depicted), and we therefore used this assay as a measure of polyreactivity. Similar to self-reactivity as determined by HEp-2 binding, the affinity of polyreactive antibodies was also reduced when the HC was paired with the  $\alpha$ HEL $\kappa$  LC (Fig. 2 E). Thus, the antibodies encoded by the V $\kappa$ 4 LC are indeed self-reactive prone and more polyreactive when paired with HCs isolated from either LC transgenic mouse. In contrast, the  $\alpha$ HEL $\kappa$  LC tends to control or reduce HC-mediated self-reactivity and polyreactivity.

### Receptor editing to endogenous LCs reduces the self-reactivity of the BCR

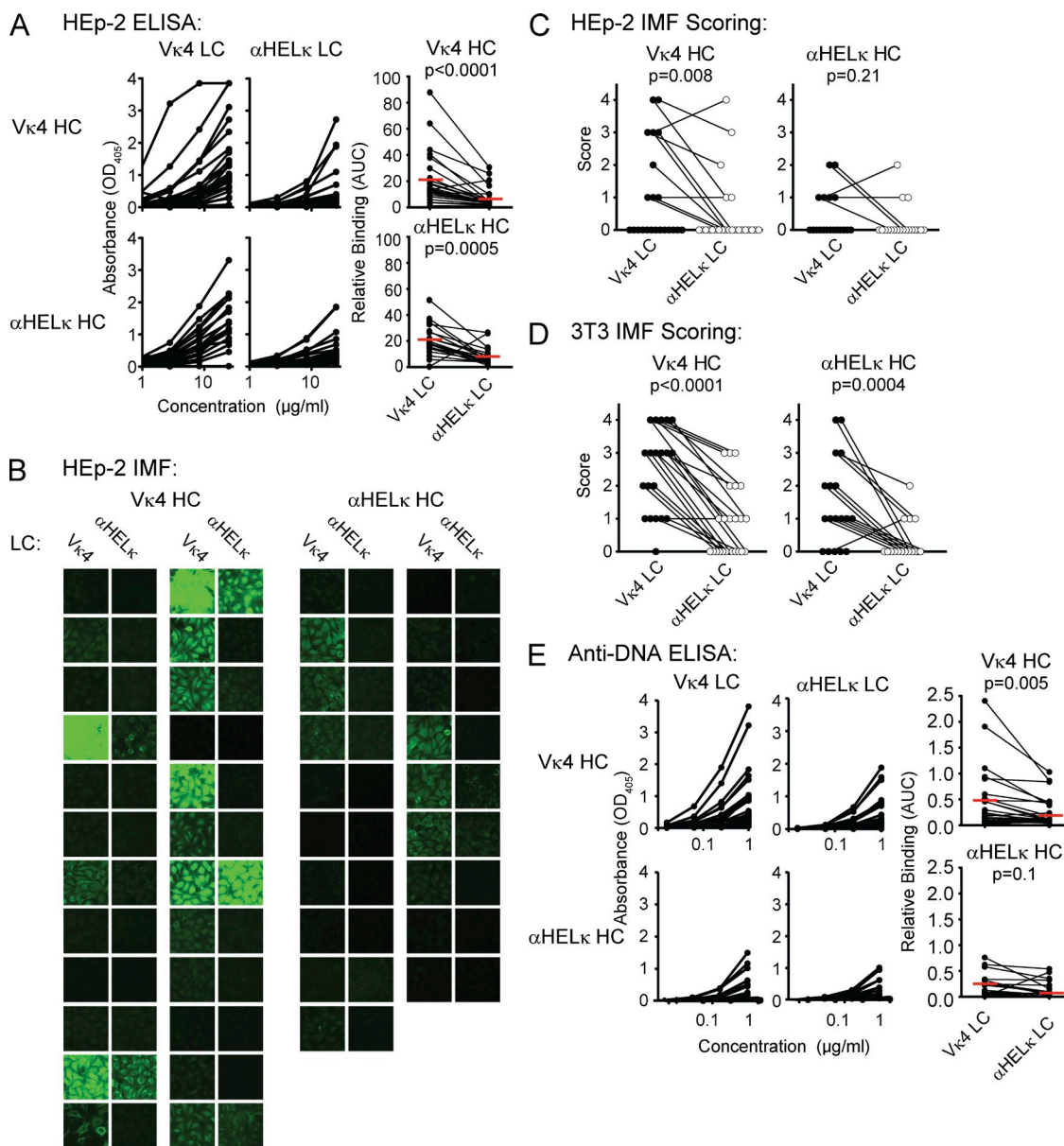
In the fixed LC knockin mice used herein, the endogenous V $\kappa$ /J $\kappa$  gene segments on the hC $\kappa$  allele are rearranged almost solely for receptor editing, either with deletion of the original LC (editing by deletion: mC $\kappa$ <sup>-</sup>hC $\kappa$ <sup>+</sup> cells) or by coexpression with the transgene (editing by inclusion: mC $\kappa$ <sup>+</sup>hC $\kappa$ <sup>+</sup> cells). This dilutes the self-reactivity of the cell to levels where the cell can avoid deletion (Gay et al., 1993; Li et al., 2002; Wardemann et al., 2004; Liu et al., 2005; Huang et al., 2006; Casellas et al., 2007; Velez et al., 2007). In either case, the majority of HCs from hC $\kappa$ <sup>+</sup> B cells are predicted to be less self-reactive when paired to hC $\kappa$  rather than with the V $\kappa$ 4 or  $\alpha$ HEL $\kappa$  LC transgenes. This provides an easily measurable biomarker identifying B cells with random specificities but reduced self-reactivity. To formally demonstrate this, we isolated B cells from the LC transgenic mice that express hC $\kappa$ , indicating they had undergone receptor editing. Some HCs may not pair well with the knockin transgenes, so in mC $\kappa$ <sup>-</sup>hC $\kappa$ <sup>+</sup> B cells, the use of the hC $\kappa$  gene may sometimes occur because of structural reasons rather than selection to reduce self-reactivity. Therefore, we first looked at B cells that had undergone receptor editing by allelic inclusion (mC $\kappa$ <sup>+</sup>hC $\kappa$ <sup>+</sup> cells) because in these cells we could verify that both the mC $\kappa$  transgene (the edited LC) and the hC $\kappa$  endogenous LC (the editor) could efficiently pair with the HC expressed by that particular B cell. Using single-cell RT-PCR, we isolated and sequenced the HC and the hC $\kappa$ <sup>+</sup>V $\kappa$ J $\kappa$  rearrangements. The HC genes were then cotransfected with either the hC $\kappa$ <sup>+</sup> (editor) gene or the original V $\kappa$ 4

or  $\alpha$ HEL transgenes, and the resulting antibodies were tested for self-reactivity by HEp-2 ELISA and IMF and dsDNA ELISAs. As indicated in Fig. 3 A, most (24/32) of the mAbs cloned from allelically included (mC $\kappa$ <sup>+</sup>hC $\kappa$ <sup>+</sup>) B cells were significantly more self-reactive when the HC was paired with the V $\kappa$ 4 transgene rather than with the hC $\kappa$ . This observation was consistent when we grouped the antibodies based on the individual mouse they were cloned from (Fig. 3 B). Similarly, by all three assays, all but one of the antibodies from allelically excluded mC $\kappa$ <sup>-</sup>hC $\kappa$ <sup>+</sup> B cells from an I $\mu$  $\kappa$ <sup>V $\kappa$ 4/h</sup> mouse bound better to self-antigen when expressed with V $\kappa$ 4 compared with hC $\kappa$  (Fig. 3 C). Thus, although structural incompatibility between the HC and LC may play some role in receptor editing, LC editing primarily occurs to reduce autoreactivity in I $\mu$  $\kappa$ <sup>V $\kappa$ 4/h</sup> mice. It is more difficult to detect a difference in self-reactivity between hC $\kappa$ <sup>-</sup> and  $\alpha$ HEL $\kappa$ -expressing antibodies as very few mature B cells in I $\mu$  $\kappa$  <sup>$\alpha$ hel/h</sup> mice, regardless of the LC, bind self-antigen at detectable levels in the assays used here. However, the HCs from both mC $\kappa$ <sup>+</sup>hC $\kappa$ <sup>+</sup> and mC $\kappa$ <sup>-</sup>hC $\kappa$ <sup>+</sup> B cells cloned from an I $\mu$  $\kappa$  <sup>$\alpha$ hel/h</sup> mouse were more often dsDNA reactive when expressed with the  $\alpha$ HEL $\kappa$  transgene (Fig. 3, D and E). Furthermore, though not significantly increased on average, there were several clear examples where HEp-2 ELISA and/or IMF positivity was increased when the HC was paired with the  $\alpha$ HEL $\kappa$  transgene compared with the hC $\kappa$  editor (Fig. 3, D and E). We can reliably conclude, then, that in this transgenic LC system, receptor editing and expression of the hC $\kappa$  allele serve as a tolerance mechanism to reduce the autoreactivity of the mature B cell repertoire. Thus, by quantifying the loss of transgenic mC $\kappa$  LC using B cells (and the concomitant accumulation of edited hC $\kappa$ <sup>+</sup> and  $\lambda$ <sup>+</sup> B cells), we have a biomarker to analyze central and peripheral immune tolerance events in mice containing a diverse, polyclonal HC repertoire.

### V $\kappa$ 4-expressing B cells are first counter-selected in the BM

Given their relative self-reactive properties, we would expect substantially more counter-selection of B cells expressing the V $\kappa$ 4 over the  $\alpha$ HEL $\kappa$  transgene beginning at the earliest stage of B cell development when the HC/LC pair is first expressed on the cell surface. Indeed, when we measured by flow cytometry the percentage of immature B cells (B220<sup>+</sup>IgM<sup>+</sup>CD23<sup>-</sup>; Fig. S1 A) in the BM that were mC $\kappa$ <sup>+</sup>, hC $\kappa$ <sup>+</sup>, or  $\lambda$ <sup>+</sup>, a substantially higher percentage of immature cells in the I $\mu$  $\kappa$ <sup>V $\kappa$ 4/h</sup> mice had undergone receptor editing and expressed an hC $\kappa$  or  $\lambda$  LC (Fig. 4, A and B), similar to data published previously (Casellas et al., 2001, 2002). On average, 85% of immature B cells from I $\mu$  $\kappa$  <sup>$\alpha$ hel/h</sup> mice expressed the mC $\kappa$  LC, whereas only ~65% of the immature B cells did so in the I $\mu$  $\kappa$ <sup>V $\kappa$ 4/h</sup> mice (Fig. 4 B).

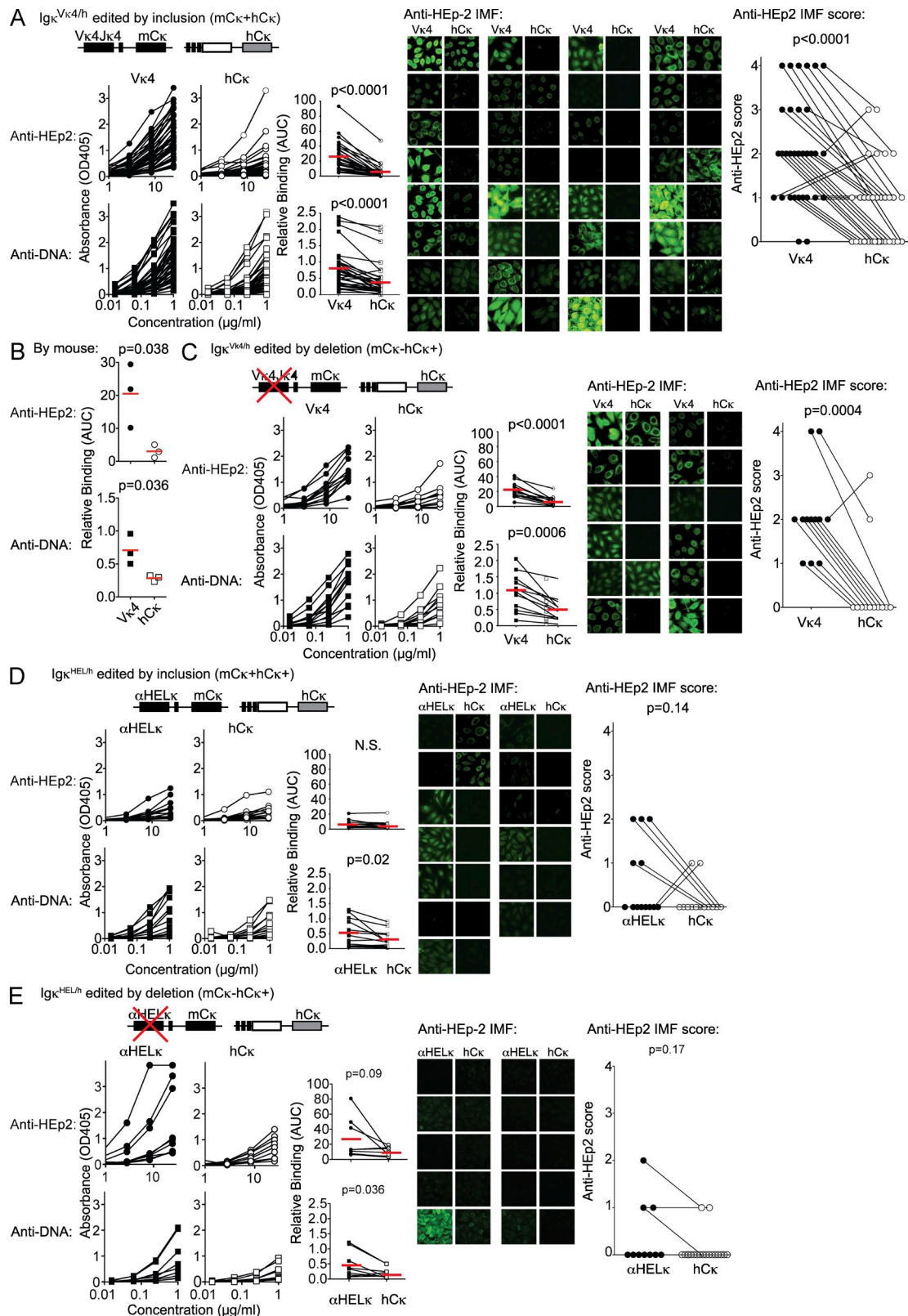
The different frequencies of edited cells in the two strains could be caused by either increased levels of receptor editing or greater deletion of unedited mC $\kappa$ <sup>+</sup> cells in the I $\mu$  $\kappa$ <sup>V $\kappa$ 4/h</sup> mice during development in the BM. In an attempt to differentiate these two possibilities, we compared the relative levels of receptor editing in I $\mu$  $\kappa$  <sup>$\alpha$ hel/h</sup> mice versus I $\mu$  $\kappa$ <sup>V $\kappa$ 4/h</sup> mice by measuring levels of recombining sequence (RS) rearrangements formed



**Figure 2. A mouse model of selection in the context of a polyclonal repertoire.** (A) Recombinant mAbs were expressed from pairing different HC genes of the B220<sup>+</sup>AA4<sup>-</sup> mature mCκ<sup>+</sup>hCκ<sup>-</sup> B cells isolated from Igκ<sup>Vκ4/h</sup> mice (a total of 24 VH genes; top) or Igκ<sup>αhel/h</sup> mice (a total of 19 VH genes; bottom) with vectors containing either the Vκ4 or αHELκ LC genes. Each pair of antibodies sharing the same VH gene was tested simultaneously. ELISA binding curves are shown in the left (VH/Vκ4 antibodies) and middle (VH/αHELκ antibodies) panels. Each dot in the right panel represents the area under the binding curve (AUC) of one mAb. The red line indicates the mean value for that group. (B and C) Binding to HEP-2 cells by IMF of mAbs described in A. Shown are representative images of cell binding of each antibody (B) and pairwise comparison of the mode of IMF intensity of each VH gene paired with the Vκ4 or αHELκ LC (C) scored on a scale of 0–4 (whole numbers only). (D) Antibody binding to 3T3 cells detected and scored in the same manner as HEP-2 cells in C. (E) dsDNA binding by ELISA of antibodies described in A and analyzed as in A. Antibodies with shared VH genes were paired both for comparing ELISA binding curves (AUC) and for scoring HEP-2 IMF. Statistical significance was calculated using the paired Student's *t* tests. Shown are representative data of at least three independent experiments.

during the primary stage of receptor editing in BM B220<sup>+</sup> CD43<sup>-</sup>IgM<sup>-</sup> pre-B cells (Panigrahi et al., 2008), leading to the inactivation of the original κ LC allele. There was no significant difference in the relative frequency of RS rearrangements between Igκ<sup>Vκ4/h</sup> and Igκ<sup>αhel/h</sup> mice at the pre-B cell stage (Fig. 4 C), suggesting overall levels of receptor editing might

be the same. However, editing can occur without terminal RS rearrangements (Nemazee, 2006), allowing the possibility of allelic inclusion. When we looked in more detail, we found that as expected, there were lower levels of RS rearrangements in sorted, largely unedited, mCκ<sup>+</sup> immature B cells of either strain in comparison with total Igκ<sup>+</sup> splenic mature B cells



**Figure 3. Receptor editing to endogenous LCs reduces the autoreactivity of the BCR.** (A–C) The level of autoreactivity of mAbs cloned from mature B cells in  $Ig\kappa^{V\kappa4/h}$  mice that were allelically included mC $\kappa$ +hC $\kappa$ + (A) or mC $\kappa$ -hC $\kappa$ + excluded (C). A total of 88 mAbs from 44 allelically included cells (sorted from three  $Ig\kappa^{V\kappa4/h}$  mice) and 12 mAbs from allelically excluded cells were tested. Analysis by mouse for allelically included cells is provided in B. Shown is total binding to HEp-2 cells and dsDNA by ELISA and to HEp-2 cells by IMF as described for Fig 2. Statistics were calculated by the paired

from wild-type B6 mice. Also, predictably, in the  $Ig\kappa^{\alpha hel/h}$  mice there were more RS rearrangements in the immature cells that had undergone receptor editing (the  $hC\kappa^+$  fraction) compared with the unedited  $mC\kappa^+$  fraction. Interestingly however, RS rearrangement levels were virtually unaltered between the edited and unedited immature B cell fractions sorted from  $Ig\kappa^{V\kappa4/h}$  mice (Fig. 4 C). This reduction in  $V\kappa$  RS terminal rearrangements correlates with a twofold increase in the percentage of allelically included  $mC\kappa^+hC\kappa^+$  surface double-positive immature B cells in  $Ig\kappa^{V\kappa4/h}$  mice (Fig. 4 D). More strikingly, when we single-cell sorted splenic transitional edited  $mC\kappa^-hC\kappa^+$  cells and determined by RT-PCR the  $\kappa$  chain or chains expressed, we found that an estimated 57% of cells isolated from  $Ig\kappa^{V\kappa4/h}$  mice still expressed at the transcript level both the original fixed LC and the newly rearranged  $hC\kappa^+$  LC, whereas only  $\sim 20\%$  of the transitional  $hC\kappa^+$  cells from  $Ig\kappa^{\alpha hel/h}$  mice expressed two LCs (Fig. 4 E). This difference in the editing mechanism between the two transgenic mice makes it difficult to determine exactly the relative level of receptor editing. However, significantly higher levels of self-antigen-mediated deletion in the BM were not apparent in  $Ig\kappa^{V\kappa4/h}$  mice as total numbers of B cells at all developmental stages were not altered in the BM or spleen (Fig. 4 F). We conclude from these experiments that increased receptor editing and limited levels of deletion are induced to mitigate LC-mediated autoreactivity at the immature stage of development in the BM.

### A substantial proportion of primary B cell tolerance occurs in the periphery

When we compared the level of edited cells between immature BM and mature splenic follicular mature (FM;  $AA4^-CD21^{int}CD23^+$ ) B cells in  $Ig\kappa^{V\kappa4/h}$  mice, we found that the percentage of edited  $hC\kappa^+$  cells had almost doubled from  $\sim 30\%$  in the immature B cell subset to  $>60\%$  in the splenic FM compartment (Fig. 5, A and B). The percentage of  $hC\kappa^+$  cells also increased in the periphery of  $Ig\kappa^{\alpha hel/h}$  from a mean of 13% in the BM immature subset to around 20% at the mature stage in the spleen (Fig. 5, A and B). There was little difference in LC usage between mature B cells in the spleen, LNs, and BM in both LC transgenic mice (not depicted). To further delineate at what point of peripheral B cell development the loss of  $mC\kappa^+$  cells is occurring, we measured by flow cytometry LC usage in  $AA4^+IgM^{hi}CD24^{hi}CD21^{lo}CD23^-$  early transitional (T1) and  $AA4^+IgM^{hi}CD24^{hi}CD21^{int}CD23^+$  late transitional (T2) splenic B cell subsets (Fig. S1 B). No difference in LC usage was detected between immature B cells in the BM and T1 B cells in the spleen in either mouse strain, and only a small decrease in  $mC\kappa$  usage was observed between the T1 and T2 compartment in the  $Ig\kappa^{V\kappa4/h}$  mice (Fig. 5 B). Thus, the loss of transgenic LC-expressing cells is primarily

occurring between the late transitional (T2) and the FM B cell developmental subsets.

Some receptor editing can occur on the  $mC\kappa$  allele of both the  $V\kappa4$  and  $\alpha Hel\kappa$  transgene as both still contain downstream endogenous  $J\kappa$  gene segments. Therefore, to determine more accurately the percentage of cells still expressing the knockin LC in the peripheral B cell compartment, we single-cell sorted  $mC\kappa^+hC\kappa^-$  cells, amplified by RT-PCR the expressed  $\kappa$  chain from each cell, and sequenced it. Based on the analysis of  $>80$  sequences from each B cell population sorted from six mice, we determined that  $>90\%$  of  $AA4^+CD24^{hi}IgM^{hi}$  transitional (inclusive of both T1 and T2; Tr) B cells from both mouse strains still expressed the knockin LC. However, although 87% of the  $mC\kappa^+hC\kappa^-$  FM B cells from  $Ig\kappa^{\alpha hel/h}$  mice expressed the  $\alpha Hel\kappa$  LC, only 62% of FM B cells in  $Ig\kappa^{V\kappa4/h}$  mice remained  $V\kappa4^+$ . If we combine this with the flow cytometry data, the proportion of cells between the Tr and FM compartment in  $Ig\kappa^{V\kappa4/h}$  mice that had a receptor-edited LC almost doubled (43 to 82%; Fig. 5 C). Even in  $Ig\kappa^{\alpha hel/h}$  mice expressing an innocuous LC, the level of edited cells increased by about a third (21% in Tr to 29% in FM) during peripheral B cell development, presumably because of largely HC-mediated autoreactivity that the  $\alpha Hel\kappa$  LC is unable to mask.

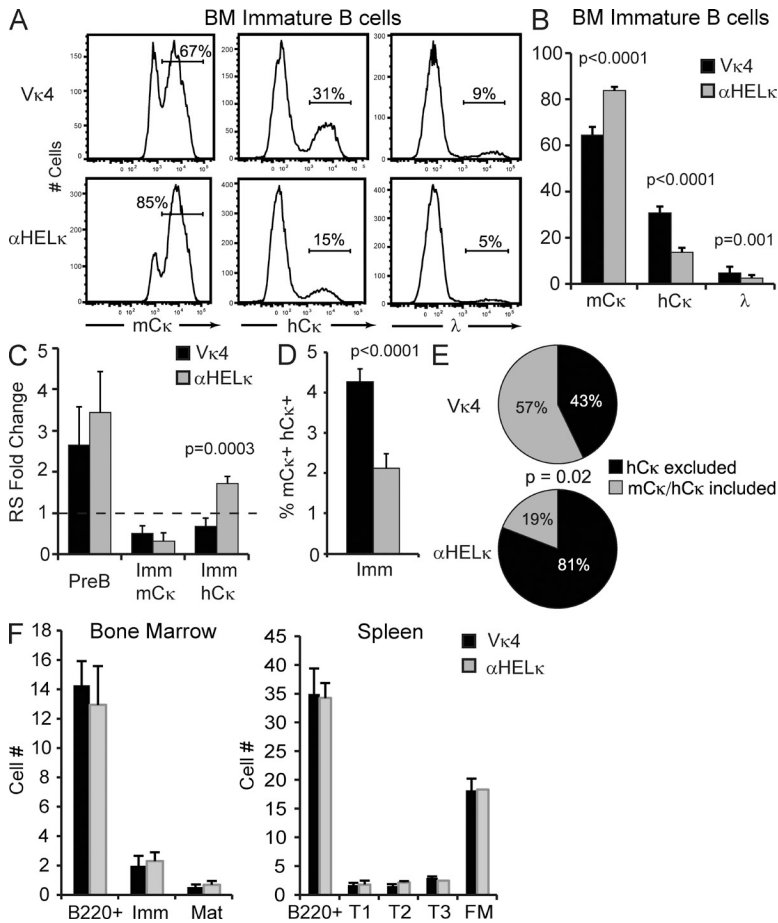
To measure the impact of peripheral tolerance on removing self-reactive and dsDNA-binding polyreactive B cells from the naive mature B repertoire, we single-cell sorted  $mC\kappa^+hC\kappa^-$  Tr and FM B cells from  $Ig\kappa^{V\kappa4/h}$  mice (Fig. S2 A), verified by sequence analysis that they expressed the  $V\kappa4$  LC, and produced mAbs with the endogenously rearranged HCs and  $V\kappa4$  LC from 30 Tr and 25 FM B cells. When we compared self-antigen binding of antibodies expressed by Tr versus FM B cells, we saw a significant reduction by HEp-2 cell ELISA in the overall level of autoreactivity between Tr and the FM B cell compartment (Fig. 5, D and E). We detected little dsDNA-binding polyreactivity, however, in either peripheral B cell compartment (Fig. 5, D and E).

These experiments show that a substantial proportion of primary tolerance occurs in peripheral locations rather than just in the BM. This is particularly striking in the  $Ig\kappa^{V\kappa4/h}$  mice but is also evident in the  $Ig\kappa^{\alpha hel/h}$  mice. Finally, we show in mice with a polyclonal B cell repertoire that the transition from T2 to FM is an important stage in primary selection during peripheral B cell development.

### Primary B cell tolerance in the periphery occurs predominantly through deletion and anergy

Deletion of self-reactive B cells is thought to be the default negative selection mechanism operating in the periphery, not receptor editing as in the BM. Indeed, similar to past studies of RAG reporter mice (Yu et al., 1999; Gärtner et al., 2000),

Student's *t* tests. (D and E) The level of autoreactivity of mAbs cloned from mature B cells in  $Ig\kappa^{\alpha hel/h}$  mice that were allelically included  $mC\kappa^+hC\kappa^+$  (D) or  $mC\kappa^-hC\kappa^+$  excluded (E). mAbs from a total of 13 allelically included cells and 9 allelically excluded cells were tested. Binding to autoantigens was performed and analyzed as in A–C. (A–E) Red lines indicated the mean AUC.



**Figure 4. Central tolerance in  $Ig\kappa^{V\kappa4/h}$  and  $Ig\kappa^{\alpha HEL\kappa/h}$  mice.** (A) Representative example of LC usage of  $B220^+IgM^+CD23^-$  immature BM B cells as determined by flow cytometry. (B) Percentage of  $mC\kappa^+$ ,  $hC\kappa^+$ , or  $\lambda^+$  cells within the immature BM B cell fraction in  $Ig\kappa^{V\kappa4/h}$  and  $Ig\kappa^{\alpha HEL\kappa/h}$  mice. Mean with SD of at least 12 mice from five independent experiments is shown. (C) The levels of RS elements were determined by quantitative PCR from genomic DNA isolated from sorted BM B cell fractions. Shown is the fold change in RS levels relative to splenic FM  $\kappa^+$  B cells sorted from wild-type B6 mice. Mean with SD of at least three experiments is shown. (D) Percentage of immature BM B cells coexpressing on the cell surface  $mC\kappa$  and  $hC\kappa$  as determined by flow cytometry. Mean with SD of nine mice from three independent experiments is shown. (E)  $mC\kappa^-hC\kappa^+$  surface positive transitional B cells were single-cell sorted, and the presence of  $mC\kappa$  and  $hC\kappa$  mRNA was determined by RT-PCR in each sorted cell. Shown is the percentage of sorted cells from each mouse type that expressed only the  $hC\kappa$  allele ( $hC\kappa$  excluded) or both the  $mC\kappa$  and  $hC\kappa^+$  allele ( $mC\kappa^+hC\kappa^+$  included) from a total of 87 ( $Ig\kappa^{V\kappa4/h}$ ) or 46 ( $Ig\kappa^{\alpha HEL\kappa/h}$ ) cells sorted in two independent experiments. Statistic used was the  $\chi^2$  test p-value. (F) Absolute number of B cell developmental subsets in the BM and spleen in  $Ig\kappa^{V\kappa4/h}$  and  $Ig\kappa^{\alpha HEL\kappa/h}$  knockin mice. Mean with SD of six mice is shown.

we were unable to detect RAG transcript expression by single-cell RT-PCR in transitional cells in the periphery of  $Ig\kappa^{V\kappa4/h}$  or  $Ig\kappa^{\alpha HEL\kappa/h}$  mice (not depicted), nor was there a significant number of Ig-low cells, which can be indicative of ongoing receptor editing (Fig. S1 B). These results indicate that continuing receptor editing during the transitional phase of development does not account for the substantial change in proportion of edited cells within the mature compartment.

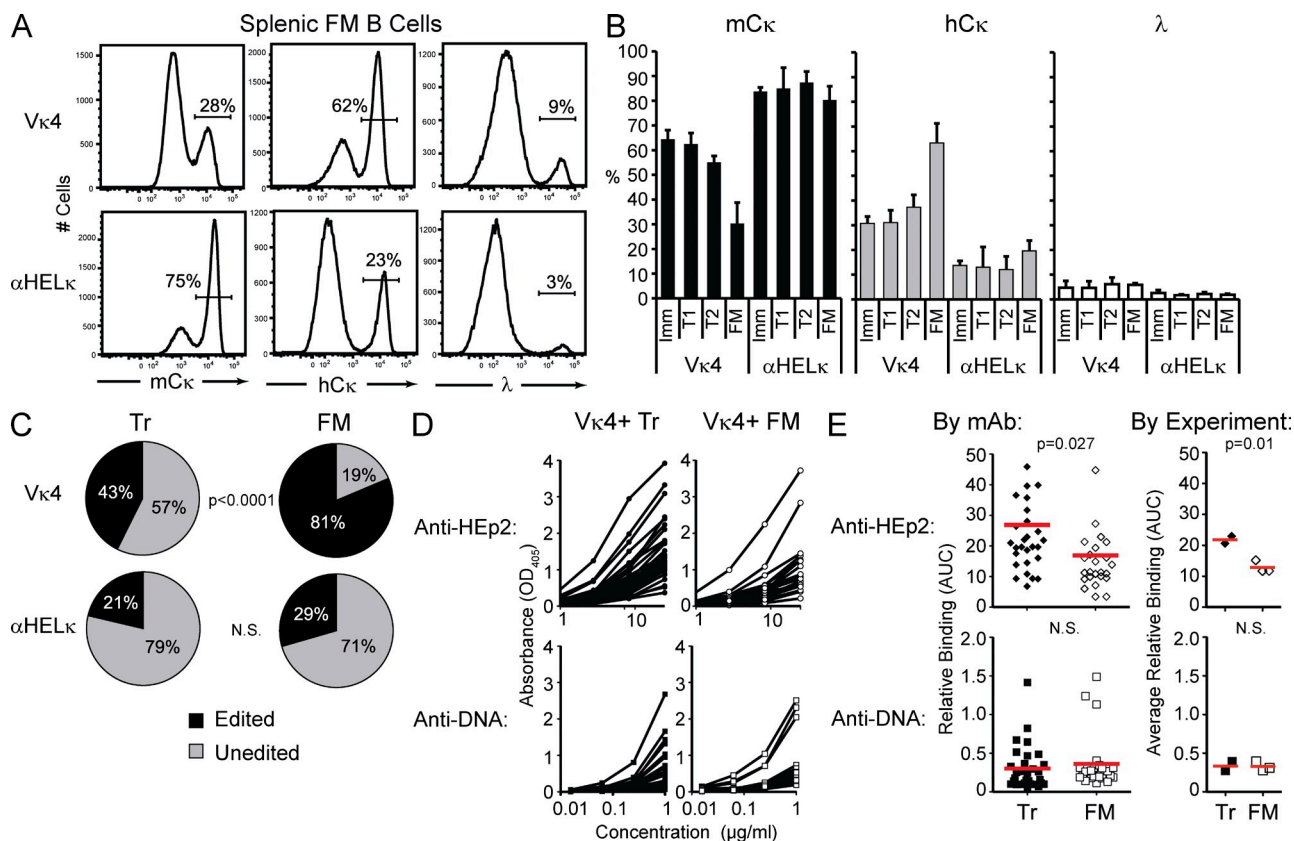
We also looked for evidence of  $V\kappa4^+$  cells being rendered anergic by encounter with self-antigen, thus preventing development into FM B cells. The absolute number of T3 ( $An1$ )  $AA4^+CD23^+IgM^{lo}$  cells previously described as anergic B cells (Merrell et al., 2006) was not different between  $Ig\kappa^{\alpha HEL\kappa/h}$  and  $Ig\kappa^{V\kappa4/h}$  mice, and surface IgM levels of other subsets were normal (Fig. 4 F and Fig. S1 B). In addition,  $V\kappa4^+$  cells were not enriched in the T3 B cell compartment, which in fact contained fewer  $V\kappa4^+$  cells than the  $IgM^{hi}$  Tr compartment (Fig. 6 A). Interestingly, however, >60% of the T3 population in  $Ig\kappa^{\alpha HEL\kappa/h}$  mice no longer expressed the  $\alpha HEL\kappa$  LC compared with ~30% in the FM compartment (Fig. 6 A). We hypothesized that these  $AA4^+CD23^+IgM^{lo}$  receptor-edited cells likely express an HC with intrinsic self-reactive properties, triggering receptor editing and eventually anergy when LC rearrangement proved unsuccessful at completely correcting self-reactivity. To test whether these  $hC\kappa^+$  T3 cells were cells in which receptor

editing failed to reduce self-reactivity, we single-cell sorted T3 cells from  $Ig\kappa^{\alpha HEL\kappa/h}$  mice (Fig. S2 B) and cloned the HC and  $hC\kappa$  LC and expressed antibodies containing the HC paired with either the unedited  $\alpha HEL\kappa$  or the rearranged  $hC\kappa$  LC. In contrast to FM B cells (Fig. 3 E), in 9/11 T3 antibody pairs tested, expression of a rearranged LC did not lead to reduction in self-reactivity compared with antibodies with the unedited  $\alpha HEL\kappa$  LC (Fig. 6 B). Indeed, when we directly compared the self-reactivity of antibody pairs from edited FM and T3 B cells, although there was no difference between the two populations in the ability of  $\alpha HEL\kappa$ -containing antibodies to bind HEp-2 cells, T3  $hC\kappa^+$  antibodies were more self-reactive than their FM counterparts (Fig. 6 C). Though not statistically significant, a similar trend was observed in the ability to bind dsDNA (Fig. 6 C). Together, these data indicate that unedited self-reactive cells primarily undergo deletion in the periphery, whereas cells that have undergone editing in BM but retain some level of HC-mediated autoreactivity are maintained in an anergic state in the periphery.

**Many self-reactive B cells are removed from the repertoire at the T2 to mature transition**

To better understand the level of BCR self-reactivity that triggers different forms of tolerance, we compared the levels of autoreactivity of cells that had or had not undergone receptor

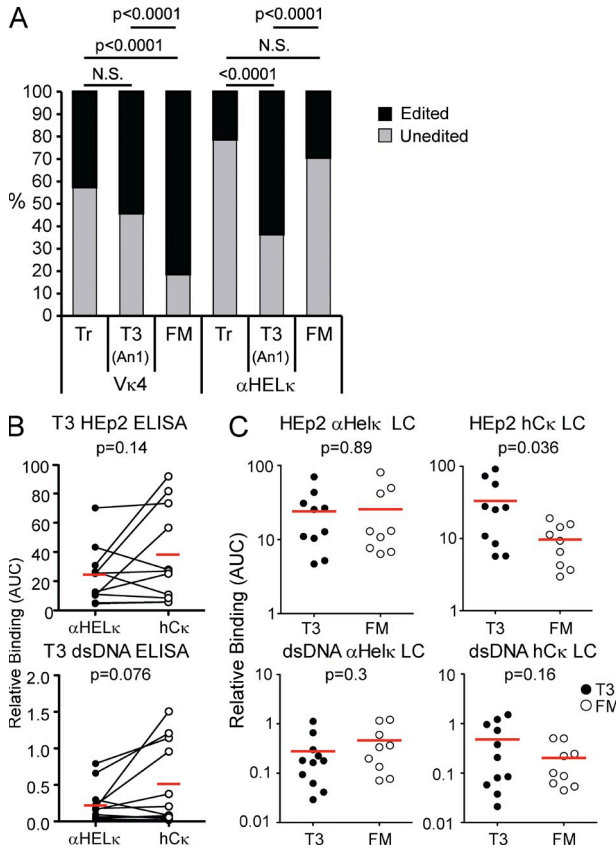




**Figure 5. Peripheral tolerance in  $Ig\kappa^{V\kappa4/h}$  and  $Ig\kappa^{\alpha hel/h}$  mice.** (A) Representative example of LC usage of splenic FM B cells as determined by flow cytometry. (B) Mean percentage of BM immature, splenic T1 and T2, and FM B cells expressing mC $\kappa$ , hC $\kappa$ , or  $\lambda$  on their cell surface. Shown is the mean of at least 16 mice from five independent experiments. Error bars indicate SD of the mean. Student's *t* test *p*-values are as follows: V $\kappa$ 4-mC $\kappa$ : T1 versus FM, *P* < 0.0001; T1 versus T2, *P* < 0.0001; T2 versus FM, *P* < 0.0001. V $\kappa$ 4-hC $\kappa$ : T1 versus FM, *P* < 0.0001; T1 versus T2, *P* = 0.006; T2 versus FM, *P* < 0.0001.  $\alpha$ HEL $\kappa$ -mC $\kappa$ : T1 versus FM, *P* = 0.07; T2 versus FM, *P* = 0.0004.  $\alpha$ HEL $\kappa$ -hC $\kappa$ : T1 versus FM, *P* = 0.007; T2 versus FM, *P* = 0.0001. (C) Percentage of splenic Tr and FM B cells expressing the LC knockin (unedited) or an alternative LC (edited mC $\kappa$ , hC $\kappa$ , or  $\lambda$ ) through receptor editing. To differentiate between mC $\kappa$ <sup>+</sup> cells that still expressed the LC knockin or had undergone receptor editing on the mC $\kappa$  allele, mC $\kappa$  surface-positive cells were single-cell sorted, and the variable portion of the  $\kappa$  allele was sequenced. Statistic used was the  $\chi^2$  test *p*-value. (D and E) The HC variable region cloned from single-cell sorted unedited Tr (closed symbols) and FM (open symbols) B cells isolated from pooled  $Ig\kappa^{V\kappa4/h}$  mice in two (Tr) or three (FM) independent experiments was cloned and paired with the V $\kappa$ 4 LC to express mAbs. These were then tested for autoreactivity by HEP-2 cell and dsDNA ELISAs as described for Fig 2. Shown in D are the binding curves of each antibody and in E the AUC of HEP-2 or dsDNA binding for each antibody or the mean AUC (red lines) for antibodies isolated in each experiment.

editing in  $Ig^{V\kappa4/h}$  mice. To estimate the preselection reactivity of cells induced to undergo receptor editing, we took HC genes from cells that no longer expressed the V $\kappa$ 4 LC (V $\kappa$ 4<sup>-</sup>hC $\kappa$ <sup>+</sup>) or were allelically included (V $\kappa$ 4<sup>+</sup>hC $\kappa$ <sup>+</sup>) and paired them with the original V $\kappa$ 4 LC. The autoreactivity of these preselection HC/LC pairs was then compared with antibodies containing the HC paired with an edited, rearranged hC $\kappa$  LC (postselection hC $\kappa$ <sup>+</sup>) and to antibodies cloned from cells that had reached maturity without undergoing receptor editing (V $\kappa$ 4<sup>+</sup>hC $\kappa$ <sup>-</sup>; Fig. 7 A). As expected, the two groups of antibodies representing the preselection condition had the highest levels of autoreactivity as measured by HEP-2 ELISA and IMF (Fig. 7 A). The affinity and number of dsDNA-binding polyreactive antibodies was also increased in preselected antibodies. Notably, as suggested by our previous publication (Casellas et al., 2007), many allelically included B cells escaped primary immune

tolerance controls despite continued expression of HC/LC self-reactive pairs. It is also interesting that both Tr B cells, the earliest population to have exited central selection but have not completed peripheral selection, and edited and unedited post-selection antibodies isolated from mature B cells had very low levels of dsDNA-binding compared with preselection antibodies (Figs. 5 E and 7 A). This suggests that B cells expressing polyreactive antibodies capable of binding this autoantigen were strongly counter-selected during central B cell development before these cells reached the periphery. HEP-2 reactivity, however, declined between unedited cells at the Tr developmental stage and full maturation (Figs. 5 E and 7 A). The level of autoreactivity was even lower in mature cells that had undergone receptor editing. Overall, these experiments indicate first that receptor editing results in a significant reduction in the mean degree of autoreactivity to a level



**Figure 6. Tolerance by anergy predominates in  $Ig\kappa^{\alpha hel/h}$  mice.** (A) Percentage of cells in the splenic Tr and T3 (or An1) and FM B cell fractions that express the LC knockin or receptor-edited LCs as determined by flow cytometry and sequence analysis of LC transcripts. Flow cytometry data are the mean of at least 16 mice from five independent experiments. Sequencing of LC transcripts was performed on at least 40 single cells for each B cell population. Statistic used was the  $\chi^2$  test p-value. (B) The HC variable region cloned from single-cell sorted edited T3 ( $n = 11$ ) B cells isolated from  $Ig\kappa^{\alpha hel/h}$  mice was cloned and paired with the  $\alpha HEL\kappa$  LC or cloned rearranged hC $\kappa$  LC to express mAbs and tested for autoreactivity by HEp-2 cells and dsDNA ELISAs as described for Fig 2. Antibodies with shared VH genes were paired for comparing ELISA binding curves (AUC) of HEp-2 (top) or dsDNA (bottom) reactivity with the edited (hC $\kappa$ ) or original  $\alpha HEL\kappa$  LC. Statistical significance was calculated using the paired Student's  $t$  tests. (C) Comparison of binding curves (AUC) with HEp-2 cells or dsDNA binding between antibodies composed of HCs cloned from edited (hC $\kappa^+$ ) T3 and FM B cells in  $Ig\kappa^{\alpha hel/h}$  mice and expressed with the respective  $\alpha HEL\kappa$  (left) or hC $\kappa$  LC (right). (B and C) Red lines indicated the mean AUC.

that allows them to reach the mature naive B cell stage. Second, whereas polyreactive cells capable of binding dsDNA were removed or edited primarily during the central stage of tolerance, those binding other autoantigens as detected by HEp-2 ELISA and IMF were predominantly removed during the peripheral stage of tolerance.

**The LC repertoire of activated  $IgG^+$  B cells mirrors the naive FM compartment**

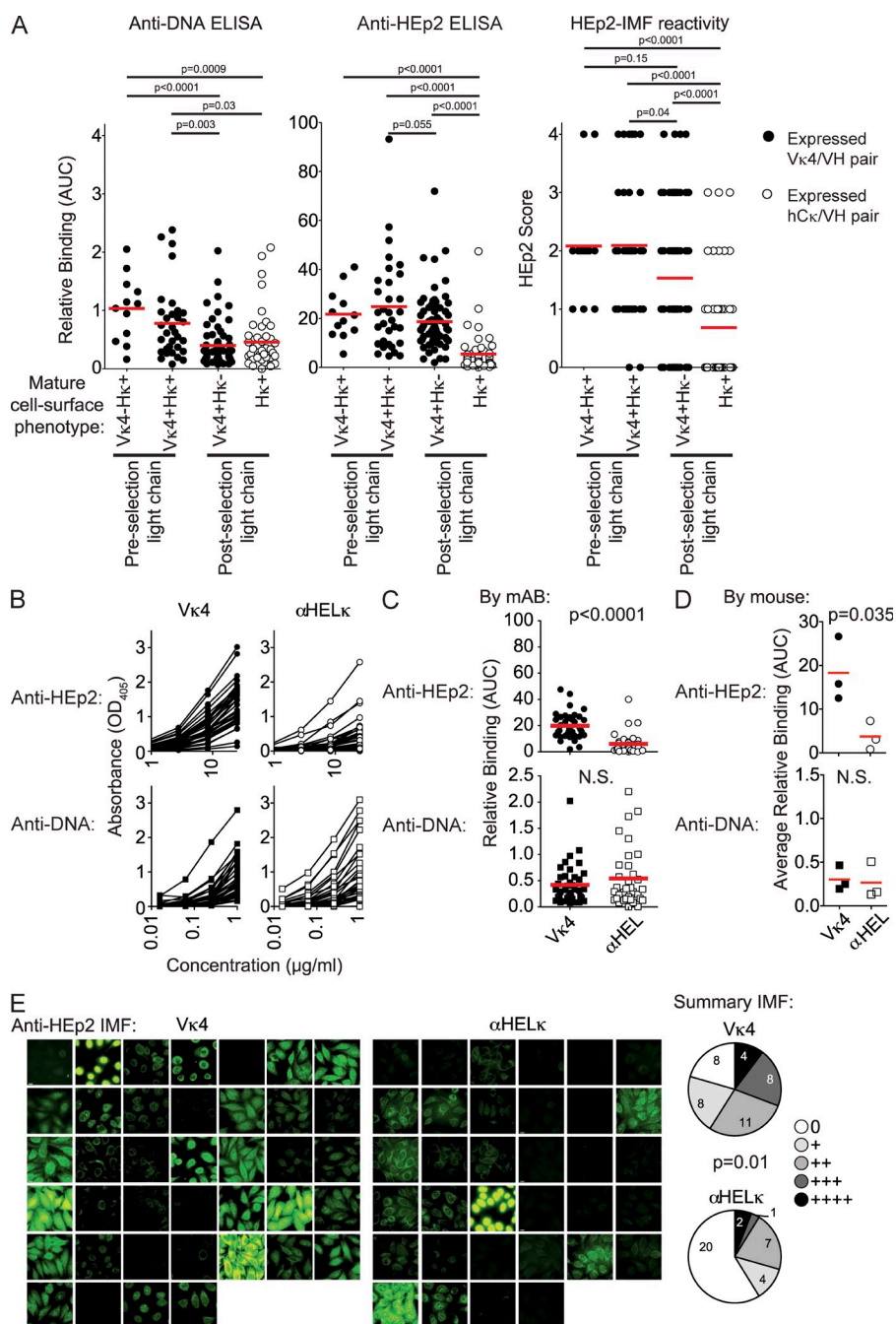
Despite the extensive peripheral deletion occurring in the  $Ig\kappa^{V\kappa4/h}$  mice, the remaining  $V\kappa4^+$  cells in the naive mature

compartment were, as a whole, more HEp-2 reactive compared with edited hC $\kappa^+$  cells in the same mice or mature  $\alpha HEL\kappa$  LC-expressing cells (Fig. 7, A–E). We therefore looked for evidence of further selection against  $V\kappa4^+$  cells during B cell activation, or secondary tolerance. We saw similar LC usage when we compared splenic FM naive B cells and  $IgG^+$  B cells in  $Ig\kappa^{V\kappa4/h}$  mice but detected a small, but reproducible decrease in mC $\kappa^+$  cells in isotype-switched  $IgG^+$  compartment in the  $Ig\kappa^{\alpha hel/h}$  mice (Fig. 8 A). This may be because the naive mature cells in the small, but more diverse hC $\kappa^+$  mature pool are more likely to encounter foreign antigen and enter an immune response. The proportion of serum  $IgG$  antibodies expressing mC $\kappa$  versus hC $\kappa$  (edited) LC and  $IgG$  antibody-secreting cells also correlated with the number of naive mature B cells expressing these LCs (Fig. 8, B and C). Thus, despite the higher level of autoreactivity still present in the unedited fraction of naive FM B cells in  $Ig\kappa^{V\kappa4/h}$  compared with  $Ig\kappa^{\alpha hel/h}$  mice (Fig. 7, B–E), we detected no further selection against cells expressing the self-reactive prone  $V\kappa4$  LC during B cell activation and differentiation into antibody-secreting cells and isotype-switched cells on a B6 background.

**Systemic autoimmune disease in MRL/lpr mice is exacerbated by expression of the  $V\kappa4$  LC**

To study the importance of tolerance mechanisms during B cell development, we crossed the  $Ig\kappa^{V\kappa4/h}$  and  $Ig\kappa^{\alpha hel/h}$  mice onto the autoimmune MRL/lpr background where defects in central and peripheral B and T cell tolerance lead to systemic lupus-like disease. On the MRL/lpr background, there was no significant difference in the relative level of RS elements in pre-B or immature B cells in the BM (Fig. 9 A) or in the levels of allelically included cells at the transcript or protein level (not depicted). This suggests that the levels of receptor editing in  $Ig\kappa^{V\kappa4/h}$  mice were not altered between the two genetic backgrounds. However, as published previously (Panigrahi et al., 2008), we did detect lower levels of RS elements in MRL/lpr mice without a fixed LC compared with B6 mice (not depicted). Although there was only a modest increase in the levels of mC $\kappa^+$  (self-reactive prone) cells at the BM immature stage in the  $Ig\kappa^{V\kappa4/h}$  MRL/lpr mice, there was a substantial increase in these cells at the FM stage of development compared with the B6 background (Fig. 9 B). Indeed, when we determined the percentage of splenic B cells by flow cytometry and single-cell sequence analysis of the  $\kappa$  locus that still expressed the transgenic LC, we saw little to no difference in LC usage at the Tr stage in  $Ig\kappa^{V\kappa4/h}$  mice between B6 and MRL/lpr mice (Fig. 9 C). At the FM stage, however, whereas 80% of the cells in the B6 mice were receptor edited, in the MRL/lpr mice, only 65% of the cells had an edited LC (Fig. 9 C). Likewise, fewer receptor-edited FM B cells were detected in MRL/lpr  $Ig\kappa^{\alpha hel/h}$  mice. Thus, in the MRL/lpr mouse model of lupus, a significant proportion of the defect in primary immune tolerance occurs during the peripheral stages of B cell selection.

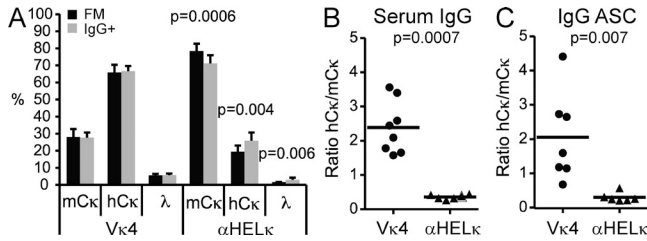
We then wanted to determine whether this difference in peripheral tolerance impacted the progression of autoantibody



**Figure 7. Developmental sites and stages of B cell immune tolerance.** (A) Comparison of dsDNA and HEp-2 cell binding of antibodies representing different stages of selection in the Igκ<sup>Vκ4/h</sup> mice. All antibody binding data for HEp-2 cell and dsDNA by ELISA and the blinded scores for anti-HEp-2 IMF were compiled to compare the relative levels of autoreactivity before and after B cell selection. To do so, pre-selection recombinant mAbs composed of VH genes from allelically included (Vκ4κ<sup>+</sup>hCκ<sup>+</sup>) or allelically excluded (Vκ4κ<sup>-</sup>hCκ<sup>+</sup>) edited mature cells paired with the Vκ4 LC and postselection recombinant mAbs composed of VH genes from mature unedited cells (Vκ4<sup>-</sup>hCκ<sup>-</sup>) paired with the Vκ4 LC or VH genes from mature edited cells (Vκ4<sup>-</sup>hCκ<sup>+</sup>) with the hCκ edited LC were compared. Recombinant antibodies were made with VH genes from 12 Vκ4<sup>-</sup>hCκ<sup>+</sup> mature cells, 32 Vκ4<sup>+</sup>hCκ<sup>+</sup> mature cells, 62 post-selection mature Vκ4<sup>+</sup>hCκ<sup>-</sup> cells, and 44 Vκ4κ<sup>-</sup>hCκ<sup>+</sup> edited mature cells. (B-E) Autoreactivity of mAbs cloned from single-cell sorted mature (AA4<sup>-</sup>) unedited Vκ4<sup>+</sup>hCκ<sup>-</sup> B cells from the spleens of Igκ<sup>αHEL/h</sup> and Igκ<sup>Vκ4/h</sup> mice. Antibodies were generated from a total of 37 B cells from three Igκ<sup>Vκ4/h</sup> mice (n = 10, 10, and 17 mAbs by mouse) and a total of 34 B cells from three Igκ<sup>αHEL/h</sup> mice (n = 11, 7, and 16 mAbs by mouse). The frequency of autoreactivity was tested and analyzed as in Figs. 2 and 3 using HEp-2 cells and anti-dsDNA ELISAs (B-D) and by HEp-2 IMF (E). In E, the results of blinded scoring on a scale of 0–4 are shown in pie charts. All assays were repeated at least three times. Statistic used was the χ<sup>2</sup> test p-value for E. (A, C, and D) Red lines indicated the mean AUC.

production in MRL/*lpr* mice. Total serum IgG levels were very high in both Igκ<sup>αHEL/h</sup> and Igκ<sup>Vκ4/h</sup> mice on the MRL/*lpr* background (Fig. 9 D). However, in agreement with the decreased levels of hCκ<sup>+</sup> FM B cells, the ratio of hCκ<sup>+</sup> to mCκ<sup>+</sup> serum IgG levels decreased in the MRL/*lpr* Igκ<sup>Vκ4/h</sup> mice (Fig. 9 E). Thus, altered peripheral selection of Vκ4 LC-expressing cells on the MRL/*lpr* background resulted in more Vκ4<sup>+</sup> serum IgG antibodies. Most importantly, this alteration in peripheral selection corresponded with accelerated development of IgG dsDNA antibodies, which were detectable as early as 2 mo of age

in the Igκ<sup>Vκ4/h</sup> MRL/*lpr* mice, in contrast to normal MRL/*lpr* or Igκ<sup>αHEL/h</sup> MRL/*lpr* mice (Fig. 9 F, left). This increased production of dsDNA antibodies continued as the mice aged, although total serum IgG levels were comparable between the two transgenic mice at all ages tested (Fig. 9 F, right). IgG dsDNA-specific serum antibodies were almost undetectable in both LC knockin mice on the B6 background up to 11 mo of age (not depicted). Thus, expression of an autoimmune-permissive LC can accelerate production of self-reactive antibodies when peripheral tolerance mechanisms are impaired.



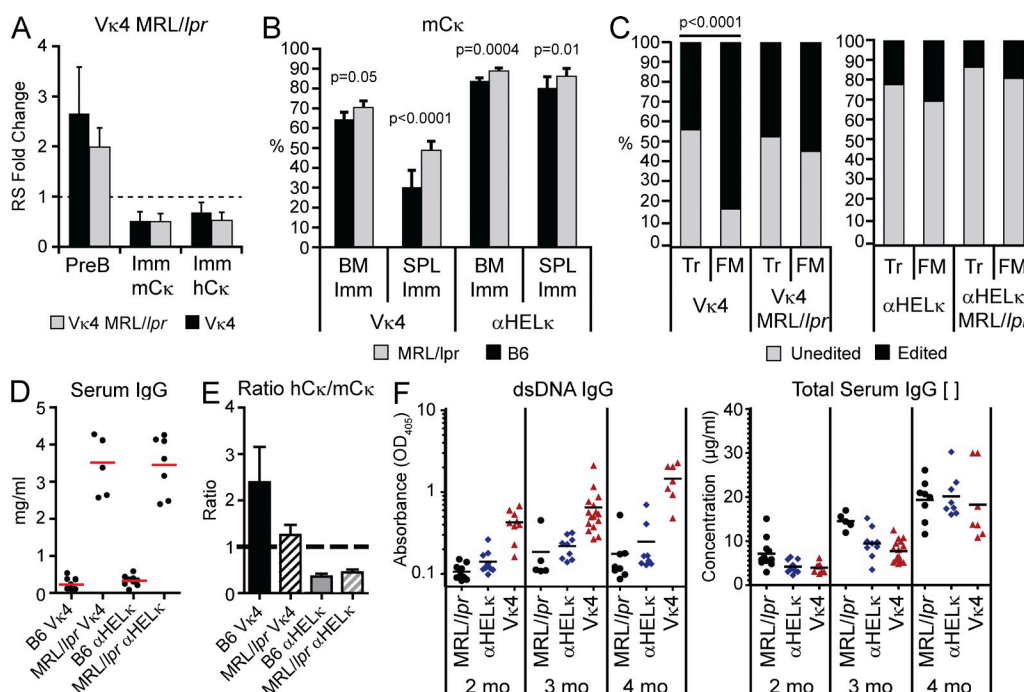
**Figure 8. Secondary tolerance in  $Ig\kappa^{V\kappa4/h}$  and  $Ig\kappa^{\alpha HEL\kappa/h}$  mice.** (A) Splenic naive FM B cells and  $IgG1/2^+$  isotype-switched cells were gated, and the percentage of cells in each population that expressed mCκ, hCκ, or λ was determined by flow cytometry. Mean with SD of nine mice from three independent experiments is shown. (B) mCκ or hCκ serum IgG levels were determined by ELISA. Shown is the ratio of the OD values of hCκ relative to mCκ for each mouse. (C)  $IgG^+$  plasmablasts expressing the mCκ or hCκ allele in the spleen were detected by ELISPOT. Shown is the ratio of hCκ+ to mCκ+  $IgG^+$  antibody-secreting cells (ASC) for each mouse. (B and C) Horizontal lines indicate the mean.

## DISCUSSION

It has long been appreciated that a portion of primary tolerance must occur as newly formed B cells transition to maturity in the periphery. However, it had been difficult to establish the relative contributions of central versus peripheral tolerance mechanisms in honing the mature repertoire that, as a pool, recognizes a multitude of self and nonself antigens. We therefore established a mouse model to track tolerance mechanisms operating in a diverse polyclonal B cell repertoire in the context of two significantly different starting levels of LC-mediated autoreactivity. The HC CDR3 forms the epicenter of the Ig antigen-binding site and thus more easily trumps LC effects on specificity (Kindt and Capra, 1984) and has been demonstrated to have profound associations with B cell selection and tolerance (Zemlin et al., 2005, 2008; Ippolito et al., 2006; Schelonka et al., 2008). However, as illustrated by the high-affinity anti-DNA 3H9 antibody isolated from MRL/*lpr* mice, the LC can have a profound influence on binding affinity and to a lesser extent on antigen specificity (Radic et al., 1991; Li et al., 2001). When paired with the 3H9 HC, variant LCs with acidic CDRs are able to reduce anti-DNA binding, whereas LCs with more neutral or basic CDRs such as the Vκ4 LC used in the study fail to do so. Thus, the Vκ4 LC in 3H9/Vκ4 and 3H9R/Vκ4 double transgenic BALB/c mice is almost invariably replaced by endogenously rearranged LCs (Gay et al., 1993; Chen et al., 1997). This, together with studies demonstrating extensive receptor editing in Vκ4 LC knockin mice, suggests that this LC has strong inherent self-binding properties (Prak and Weigert, 1995; Casellas et al., 2001). Here, we formally demonstrate that the Vκ4 LC is self-reactive when paired with a wide selection of HCs isolated from mature B cells. This led to profound selection against Vκ4+ cells both centrally and in the periphery, making this a useful mouse model to decipher the key selection checkpoints. We coupled this transgenic mouse system with cloning and expression of BCRs to track qualitatively and quantitatively the self-reactivity of B cells that

have undergone tolerance at different stages of development. Together, these methods have allowed us to gain unprecedented insight into stage-specific B cell tolerance in mice containing a diverse BCR repertoire.

We demonstrate that receptor editing of the original fixed LC by the endogenous VJκ genes as detected by hCκ+ usage reduced autoreactivity. Thus, changes in LC usage by receptor editing that we detected appear to be largely caused by negative selection aimed at reducing autoreactivity, as has been shown in many other mouse tolerance models (Retter and Nemazee, 1998; Wardemann et al., 2004; Ait-Azzouzene et al., 2005). Although the possibility that changes in B cell LC usage over the course of development are caused by positive selection cannot be formally ruled out, the demonstrated autoreactivity of Vκ4-encoded antibodies strongly suggests that changes in the repertoire were mediated by negative selection. Therefore, it was not surprising that in  $Ig\kappa^{V\kappa4/h}$  mice, a much larger percentage of immature B cells compared with  $Ig\kappa^{\alpha HEL\kappa/h}$  mice no longer expressed the LC knockin as the result of central tolerance. Strikingly, however, although the percentage of edited cells changed little between splenic early (T1) and late transitional (T2) cells, there was an almost 50% reduction in Vκ4+ -expressing cells between the T2 developmental stage and FM B cells. Although it is well established that deletion of self-reactive cells occurs in the periphery (Russell et al., 1991; Fulcher et al., 1996; Wardemann et al., 2003; Ait-Azzouzene et al., 2006; Merrell et al., 2006), the specific transitional stage at which this occurs in a polyclonal repertoire has not been well characterized. Factors regulating B cell survival clearly change between the AA4+CD23-CD21<sup>lo</sup> T1 and AA4+CD23+CD21<sup>int</sup> T2 transitional subsets, although in vitro they both undergo apoptosis upon BCR stimulation (Allman et al., 2001; Duong et al., 2010). In T2 cells, tonic BCR signaling becomes vital for survival, and up-regulation of BAFFR levels coincides with responsiveness to the survival signal provided by BAFF (Hsu et al., 2002; Chung et al., 2003). Mice lacking BCR signaling components and BAFF expression have a block in development between the T1 and T2 stage, and conversely, mice overexpressing BAFF or lacking the proapoptotic gene *Bcl2l1* have selective survival of cells at the T2 stage and beyond (Batten et al., 2000; Schiemann et al., 2001; Craxton et al., 2005). Given these functional differences, we expected that negative selection might occur to a significant degree between the T1 and T2 stage. However, we show that the majority of self-reactive cells that reach the periphery are lost between the T2 and FM compartments. This would suggest that positive selection through appropriate BCR/BAFF signals can occur at the T2 stage of development, but attrition is primarily occurring later for self-reactive B cells. Although maintenance of self-reactive cells this late into maturity is potentially dangerous, it allows for selection of certain polyreactive low-affinity B cells that may be important in innate-like responses (i.e., marginal zone or B1 cells) as previously demonstrated in M167 and 81x transgenic mice (Martin and Kearney, 2001; Meyer-Bahlburg et al., 2008).



**Figure 9. Tolerance in MRL/lpr mice.** (A) Quantification of RS elements from sorted BM B cell fractions of Igκ<sup>Vκ4/h</sup> mice on the B6 or MRL/lpr background. Shown is the fold change in RS levels relative to splenic FM κ<sup>+</sup> B cells sorted from wild-type B6 mice. Mean with SD of at least three experiments is shown. There were no statistical differences by Student's *t* tests. (B) Percentage of mCk<sup>+</sup> cells in splenic T1 and FM B cells from Igκ<sup>Vκ4/h</sup> and Igκ<sup>αHEL/h</sup> mice on the B6 or MRL/lpr background. Mean with SD of nine mice from four independent experiments. (C) Percentage of cells in the splenic Tr and FM fractions that express the LC knockin or receptor-edited LCs as determined by flow cytometry and sequence analysis of LC transcripts. Sequencing of LC transcripts was performed on at least 40 single cells for each B cell population in each mouse strain. Statistic used was the  $\chi^2$  test p-value. (D) Total serum IgG concentrations were quantified by ELISA in Igκ<sup>Vκ4/h</sup> and Igκ<sup>αHEL/h</sup> mice on the B6 or MRL/lpr background at 2 mo of age. Red lines indicated the mean mg/ml. (E) Relative serum levels of IgG<sup>+</sup>mCk<sup>+</sup> or hCk<sup>+</sup> antibodies. Shown is the ratio of hCk relative to mCk OD values for each mouse strain at 2 mo of age. Error bars indicate SD of the mean. (F) The level of IgG dsDNA reactive antibodies (left) or total IgG concentration (right) was determined by ELISA in serum of 2-, 3-, and 4-mo-old non-Ig transgenic MRL/lpr mice (black circles) and Igκ<sup>Vκ4/h</sup> (blue diamonds) and Igκ<sup>αHEL/h</sup> (red triangles) knockin mice on the MRL/lpr background. Horizontal lines indicate the mean. P-values at 2 mo are as follows: Vκ4 versus αHELk or Mrl/lpr,  $P < 0.0001$ . P-values at 3 mo are as follows: Vκ4 versus αHELk,  $P = 0.04$ ; Vκ4 versus Mrl/lpr,  $P = 0.001$ . P-values at 4 mo are as follows: Vκ4 versus αHELk,  $P = 0.003$ ; Vκ4 versus Mrl/lpr,  $P = 0.001$ .

In contrast to our results, in mice expressing an Igκ superantigen only in the periphery, negative selection appears to primarily occur earlier, between the T1 and T2 stage (Ait-Azzouzene et al., 2006; Ota et al., 2011). However, in this model, B cells are first encountering a high-affinity autoantigen in the periphery, resulting in deletion at first exposure to self-antigen at the early T1 transitional stage. By using an LC-mediated model of autoreactivity, we are able to study tolerance against a broad range of specificities (evident from the various affinities to HEP-2 cell extracts or dsDNA and the variant staining patterns of HEP-2 cells that were detected from the Vκ4-encoded antibodies) encountered in their physiological settings. Under these conditions, it appears that high-affinity self-reactive cells are removed earlier in the BM. Although the peripheral selection stage is still significant in magnitude, it appears to primarily remove moderate-affinity autoantibodies after the T2 stage.

Importantly, we detected very limited Vκ4-encoded polyreactive dsDNA binding in peripheral B cells, although anti-dsDNA reactivity was commonly encoded by VH genes

from edited (hCk<sup>+</sup>) cells when expressed with the Vκ4 transgene to resemble the cell's preselection specificity. It is clear that different factors including the affinity to self-reactivity influences the mechanism of tolerance (Shlomchik, 2008), but simple differences in binding affinity cannot fully explain what dictates central versus peripheral tolerance. Indeed, very low-affinity anti-MHC BCRs have been shown to be efficiently tolerized in the BM (Lang et al., 1996), suggesting that ignorance, such as seen in the AM14 rheumatoid factor transgenic mouse model (Hannum et al., 1996), not just affinity, can explain why some self-reactive B cells reach and persist in the periphery. In any case, we can clearly establish a stepwise progression in tolerance as B cells develop.

Anergic B cells and B cells that have undergone receptor editing by allelic inclusion remain self-reactive in the periphery (Goodnow et al., 1988; Hartley et al., 1991; Kenny et al., 2000; Li et al., 2002; Liu et al., 2005; Huang et al., 2006; Casellas et al., 2007; Velez et al., 2007; Duty et al., 2009; Isnardi et al., 2010), but the prevalence of these two partial forms of tolerance varied between the two LC transgenic models.

Given the high level of peripheral attrition of  $V\kappa 4^+$  B cells, it is somewhat surprising that more  $V\kappa 4^+$  cells weren't found in the T3  $IgM^lo$  B cell population. Work with Hel, ArsA1, superantigen-induced tolerance, and other model systems indicates that a major mechanism of tolerance is the presence of anergic cells in the periphery with reduced survival (Goodnow et al., 1988; Erikson et al., 1991; Santulli-Marotto et al., 1998; Benschop et al., 2001; Ota et al., 2011). But it is unclear from the literature whether peripheral deletion is necessarily preceded by low surface Ig levels and induction of an anergic state and that all deleted cells would transit through the T3 stage before undergoing apoptosis. It may be that induction of anergy (whether caused by antigen encounter in the BM or periphery) and peripheral induction of apoptosis through strong BCR signals could be two separate tolerance mechanisms. In contrast to other model systems in which peripheral attrition of cells anergized by antigen encounter is observed, we are characterizing tolerance induced in response to a myriad of different self-antigens present in different anatomical locations and with different affinities and avidities. It is probable that a given antigen that would induce frank apoptosis in the BM may only be encountered in the periphery whereupon deletion occurs.

Although there were no significant increases in the numbers of anergic  $V\kappa 4^+$  cells in  $Ig^{V\kappa 4/h}$  mice, edited  $hC\kappa$  and  $Ig\lambda^+$  cells were enriched in the T3  $IgM^lo$  B cell subset in  $Ig\kappa^{ahel/h}$  mice, and these edited cells retained a high level of self-reactivity compared with edited FM B cells. As autoreactivity is largely mediated by the HC in these mice, it is likely that these T3 B cells represent cells with self-reactive prone HCs in which receptor editing failed to mitigate the self-reactive nature of the BCR, leading to anergy. If the LC is the major contributor of autoreactivity, however, as is more often the case in  $Ig^{V\kappa 4/h}$  mice, receptor editing of the offending LC is more likely to result in a self-tolerant BCR. Cells that have both a highly self-reactive HC and LC are most likely deleted early during central tolerance. Collectively, it seems that receptor editing and deletion primarily deal with LC-mediated autoreactivity, whereas anergy plays a more significant role in HC-mediated autoreactivity.

Allelic inclusion or coexpression of two different LCs in the same cell has also been described in several different systems as a byproduct of receptor editing that allows self-reactive BCRs to escape detection and reach maturity (Gay et al., 1993; Kenny et al., 2000; Li et al., 2002; Liu et al., 2005; Huang et al., 2006; Casellas et al., 2007; Velez et al., 2007). In support of this model, when we compared the self-reactivity of BCRs with either the original  $V\kappa 4$  LC or with the  $hC\kappa$  editor cloned from mature cells coexpressing similar levels of both LCs,  $hC\kappa^+$  BCRs were more self-tolerant. The proportion of allelically included cells detected by flow cytometry was doubled in  $Ig^{V\kappa 4/h}$  mice compared with  $Ig\kappa^{ahel/h}$  mice at the same stage in the BM. Furthermore, as detected by single-cell PCR, about half of the  $Ig^{V\kappa 4/h}$  cells isolated by flow cytometry as  $hC\kappa^+$  but  $mC\kappa$  negative at the protein level expressed the  $V\kappa 4$  transgene at the transcript level, whereas much fewer did so in the  $Ig\kappa^{ahel/h}$  mice. This suggests strong selection for cells

in which the rearranged  $VJ\kappa$  gene on the  $hC\kappa$  allele outcompeted the preexisting  $V\kappa 4$  LC for pairing with the HC, which in effect resulted in receptor editing and self-tolerance. The reason for this increase in allelically included cells in  $Ig^{V\kappa 4/h}$  mice is not entirely clear. It is possible that this is an artifact of the transgenic LC as it's been shown that the  $V\kappa 4$  LC, but not the  $\alpha$ Hel LC, has impaired allelic exclusion in an  $OcaB^{-/-}$  knockout (Casellas et al., 2002). This phenotype is associated with a specific need for this transcriptional regulator for  $V\kappa 4$  but not  $\alpha$ Hel expression. However, whether allelic exclusion of  $V\kappa 4$  transgenic cells undergoing editing is reduced on a wild-type background, as in the case here, was not investigated. Alternatively, exacerbated allelic inclusion in the  $Ig\kappa^{V\kappa 4/h}$  mice could be a physiological mechanism. It may be that the LC-mediated autoreactivity of  $V\kappa 4$ -expressing cells is more easily diluted by the presence of any competing LC. Thus, during receptor editing, any additional LC that functionally rearranges and can more favorably interact with the HC can remove the LC-mediated autoreactivity. Conversely, HC-induced autoreactivity that predominates in the  $Ig\kappa^{ahel/h}$  mice must be directly controlled at the chemical level dependent on the properties of the editing  $V\kappa$  gene. For example, the presence of LC aspartate residues adjacent to HC arginines in the CDRs is essential to reduce anti-DNA reactivity in the 3H9 system (Li et al., 2001). Our observation demonstrates that  $V\kappa$  genes that are poor editors and the autoantibodies they encode are particularly prone to be maintained in mature B cells by allelic inclusion, which may have contributed to the exacerbated autoimmune disease when the  $V\kappa 4$  transgene was expressed on the  $MRL/lpr$  background herein.

The last stage of immune tolerance is to control the activation of self-reactive B cells during immune responses, some of which likely arise as the result of somatic mutations that alter specificity. Despite increased receptor editing and peripheral attrition, the fully mature  $V\kappa 4^+$  B cells from  $Ig^{V\kappa 4/h}$  mice still bind better on average to HEP-2 antigens than their counterpart in  $Ig\kappa^{ahel/h}$  mice. We hypothesized that the level of self-reactive cells might be further reduced during B cell activation and secondary tolerance. This did not appear to be the case, however, as the levels of edited cells did not change between the naive and IgG compartments in  $Ig^{V\kappa 4/h}$  mice. On the  $MRL/lpr$  background, however, we saw accelerated development of IgG dsDNA antibodies in  $Ig^{V\kappa 4/h}$  mice likely caused by defects in both primary and secondary tolerance. In the classical 3-83 BCR transgenic tolerance model, tolerance against central or peripheral expression of the H-2<sup>k</sup> self-antigen is intact on the  $MRL/lpr$  background (Rubio et al., 1996; Kench et al., 1998). Likewise, tolerance for soluble and membrane-bound Hel is unchanged in  $lpr/lpr$  mice (Rathmell and Goodnow, 1994). However, in anti-DNA models of autoimmunity, there are breaks in tolerance at multiple levels, leading to accelerated production of autoantibodies in  $MRL/lpr$  mice. For example, in 3H9 HC or 3H9/ $V\kappa 8$  HC/LC transgenic mice on the  $MRL/lpr$  background, central tolerance appears to be largely intact, but peripheral tolerance is compromised. In these mice, DNA-reactive B cells normally limited to the

peripheral immature or anergic compartment with a high turnover rate reach maturity and with T cell help become activated and differentiate into anti-DNA-secreting plasmablasts (Brard et al., 1999; Mandik-Nayak et al., 2000; Chen et al., 2006). Allelically included cells found in the 3H9/V $\kappa$ 8 transgenic mice with greater frequency in the FM compartment further contributed to the loss of tolerance and DNA-reactive B cells in MRL/*lpr* mice (Brard et al., 1999). Similarly, though we saw little change in central tolerance in these LC transgenic mice, there was a significant increase in unedited V $\kappa$ 4<sup>+</sup> and  $\alpha$ Helk LC-expressing cells in the periphery. Thus, it appears that defects in peripheral B cell tolerance increasing the level of naive precursor self-reactive cells, in combination with the availability of self-reactive T cell help, are instrumental in leading to accelerated autoimmunity in MRL/*lpr* mice.

This LC-mediated model of self-reactivity highlights the importance and complexity of peripheral tolerance. Furthermore, we demonstrate that LC-mediated autoreactivity alone can lead to accelerated development of auto-antibodies. LCs matter.

## MATERIALS AND METHODS

**Mice.** Ig $\kappa^{\text{ahel/h}}$  and Ig $\kappa^{\text{V}\kappa4/\text{h}}$  mice were provided by R. Casellas at the National Institute of Allergy and Infectious Diseases (Bethesda, MD), and the MRL/MPJ and MRL/*lpr* mice were purchased from the Jackson Laboratory. Ig $\kappa^{\text{ahel/h}}$  and Ig $\kappa^{\text{V}\kappa4/\text{h}}$  mice were bred as previously described (Casellas et al., 2001). The Ig $\kappa^{\text{ahel/ahel}}$ , Ig $\kappa^{\text{V}\kappa4/\text{V}\kappa4}$ , and Ig $\kappa^{\text{hC}\kappa/\text{hC}\kappa}$  were backcrossed to MRL/MPJ mice for six generations and then crossed with MRL/*lpr* mice for two generations. To get Ig $\kappa^{\text{ahel/h}}$  or Ig $\kappa^{\text{V}\kappa4/\text{h}}$  on the MRL/*lpr* background, mice that were MRL/*lpr*/Ig $\kappa^{\text{ahel/ahel}}$  or MRL/*lpr*/Ig $\kappa^{\text{V}\kappa4/\text{V}\kappa4}$  were crossed with MRL/*lpr*/Ig $\kappa^{\text{hC}\kappa/\text{hC}\kappa}$  mice. B6 and MRL/*lpr* without a LC transgene were bred separately in the same facility. Mice were kept and bred in the animal facility at the Oklahoma Medical Research Foundation and University of Chicago, and experiments were approved by the Institutional Animal Care and Use Committee. Unless stated otherwise, all mice were 7–10 wk of age and age matched for each experiment.

**Flow cytometry.** Single-cell suspensions were derived from mouse BM, LNs, and spleens. Cells were then stained with antibodies recognizing mouse  $\kappa$  (187.1; BD), human  $\kappa$  (goat anti-human  $\kappa$  F(ab')<sub>2</sub> mouse absorbed; SouthernBiotech),  $\lambda$  (JC-5; SouthernBiotech), B220 (RA3-6B2; BD), IgM (1B4B1; SouthernBiotech), CD93 (AA4.1; eBioscience), CD21 (7G6; BD), CD23 (B3B4; eBioscience), CD24 (M1/69; BioLegend), IgG1/2 (A85-1/R2-40; SouthernBiotech), and CD43 (S7; BD). Flow cytometry was performed on an LSR II (BD), and data were analyzed using FlowJo software (Tree Star).

**Single-cell sorting and RT-PCR.** B cells from mouse spleens were enriched using a RosetteSep murine B cell isolation kit (STEMCELL Technologies) or MACS CD43 depletion (Miltenyi Biotec) and stained with antibodies described above. Cells were presorted in bulk using a FACSAria cytometer (BD), and single cells were resorted into 96-well plates containing 10 mM Tris-HCl with 40 U/ $\mu$ l RNase inhibitor (Promega). Single-cell RT-PCR for RAG expression was performed as previously described (Yannoutsos et al., 2001). For antibody variable gene amplification, each cell was amplified in a one-step RT-PCR reaction (OneStep RT-PCR kit; QIAGEN) using a cocktail of sense primers specific for the leader region and antisense primers specific for either mC $\kappa$  or hC $\kappa$ , or F $\mu$ / $\delta$  for HC genes (primer sequences are available in Table S1). RT-PCR conditions were as follows: 50°C for 30 min, 95°C for 15 min, followed by 39 cycles of 95°C for 1 min, 55°C for 1 min, 72°C for 1 min, and, finally, 72°C for 10 min. 1  $\mu$ l from each RT-PCR reaction was reamplified using nested PCR primers specific for FW1 regions of the various V $\kappa$  genes and antisense primers specific for either mC $\kappa$

or hC $\kappa$ , or F $\mu$ / $\delta$  for HC genes. Nested PCR reaction conditions were as follows: 95°C for 15 min, followed by 39 cycles of 95°C for 1 min, 55°C for 1 min, 72°C for 1 min, and finally 72°C for 10 min. To amplify LCs from both human and mouse alleles in allelically included cells, cDNA synthesis from single cells was first performed using random primers, followed by two-step amplification of Ig transcripts using specific primers as described above. Efficiency of LC amplification was typically  $\sim$ 70%.

**mAb expression.** mAbs were produced as previously published (Wardemann et al., 2003; Wrammert et al., 2008; Duty et al., 2009; Smith et al., 2009). In brief, the Ig HC and LC variable genes from single-sorted B cells amplified by RT-PCR were sequenced, amplified, and cloned into expression vectors and expressed with human IgG constant regions in the 293A human cell line. The antibodies produced were then purified from the serum-free tissue culture media using Protein A beads.

**dsDNA and HEp-2 ELISA.** To measure the autoreactivity of the mAbs, we tested each antibody for HEp-2 binding activity using a human HEp-2 ANA ELISA kit (Alpha Diagnostic) according to the manufacturer's instructions. For the anti-dsDNA ELISAs, microtiter plates (Costar; Corning) were coated with 10  $\mu$ g/ml calf thymus dsDNA (Invitrogen). Goat anti-human IgG ( $\gamma$  chain specific) peroxidase conjugate (Jackson ImmunoResearch Laboratories, Inc.) was used to detect binding of the recombinant antibodies followed by development with AquaBlue ELISA substrate (eBioscience). Paired antibodies sharing the same HC were tested on the same plate at the same time. Absorbencies were measured at OD405 when the control antibody 3H9 included on every plate reached an OD of 3.0. mAbs were diluted to a starting concentration of 25  $\mu$ g/ml followed by three additional threefold serial dilutions for HEp-2 cell ELISAs and 1  $\mu$ g/ml followed by three additional fourfold serial dilutions for dsDNA ELISAs. Data were plotted, and area under the curve (AUC) was determined with Prism software (GraphPad Software). To determine Ig concentrations in mouse sera, 96-well plates were coated with anti-mouse IgG and blocked with PBS/0.5% BSA. Sera were diluted to 1:10,000 (B6) or 1:100,000 (MRL/*lpr*) to fall within the concentration range of the IgG standard control. Detection was performed with HRP-conjugated anti-mouse IgG (SouthernBiotech). To determine the levels of anti-dsDNA antibodies in mouse sera, 1:100 dilutions of serum were added to microtiter plates coated with calf-thymus DNA and blocked with PBS + 5% BSA. Bound Igs were detected with HRP-conjugated anti-mouse IgG. To normalize results across plates, each plate had serum from the same MRL/*lpr* mouse, and the absorbance was read when this sample reached an OD405 of 3.0.

**ELISPOT.** Multiscreen HTS filter plates (EMD Millipore) were coated overnight with mouse or human anti- $\kappa$  antibody followed by incubation with  $3 \times 10^6$ /well total splenocytes overnight and detection of secreted antibodies with biotin-conjugated anti-mouse IgG (SouthernBiotech) and streptavidin peroxidase.

**HEp-2 and 3T3 cell staining.** mAbs at 50  $\mu$ g/ml were screened on commercial ANA (HEp-2 cell) slides (Bion Enterprises, Ltd.) according to the manufacturer's recommended protocol. 3T3 cells were grown on chambered slides and fixed with acetone before staining with mAbs according to the same protocol as with the HEp-2 slides. Paired antibodies sharing the same HC were tested on the same slide at the same time. HEp-2 and 3T3 slides were analyzed using a fluorescent microscope (Axioplan II; Carl Zeiss). All HEp-2 and 3T3 reactivity was compared with positive and negative control sera included in the ANA commercial kit. Binding to HEp-2 and 3T3 cells by IMF was independently scored in a blinded manner on a scale of 0–4 by several individuals.

**RS element detection.** Detection of RS rearrangements was performed as described previously (Panigrahi et al., 2008). In brief, genomic DNA was isolated from sorted cells using a Puregene kit (QIAGEN). Quantitative PCR was then performed using *Taqman* technology (Applied Biosystems) with primers and probes specific to RS elements and actin (Meng et al., 2011).

**Spectratyping.** Genomic DNA was isolated from sorted cells, purified according to the manufacturer's directions using Puregene, and amplified using the J606.1 or J558.85 VH primers and a labeled JH2 reverse primer as described previously (Meng et al., 2011). All primers were synthesized by Integrated DNA Technologies. 2  $\mu$ l PCR product per reaction was resolved by capillary electrophoresis on an ABI 3100 analyzer (Applied Biosciences). Peak scanner version 1.0 was used to generate and analyze the spectratypes (Applied Biosciences). To measure the frequency of individual rearrangements accurately, the input DNA was diluted to very low concentrations (up to 2,000 cells) in each independent PCR reaction, so that each spectratype of a given size corresponds to only one rearrangement.

**Statistics.** Statistics were performed using Prism software (analyzing column and grouped data by Student's *t* test and by ANOVA) or Microsoft Excel (for  $\chi^2$  test statistics). Unless stated otherwise in the figure legend, statistical significance was determined using a two-tailed Student's *t* test of independent sample means.

**Online supplemental material.** Fig. S1 shows B cell developmental subsets in LC transgenic mice. Fig. S2 shows LC usage in mature B cell populations and sort purity. Table S1 lists primers used in this study. Online supplemental material is available at <http://www.jem.org/cgi/content/full/jem.20120525/DC1>.

We thank Marin Weigert for helpful discussions.

This work was supported by National Institutes of Health grants to P.C. Wilson (including RO1AI76585-01 and U19AI082724-02) and grants from the Arthritis Foundation and Lupus Research Institute to E.T.L. Prak.

The authors declare no financial or commercial conflicts of interest.

Submitted: 8 March 2012

Accepted: 28 November 2012

## REFERENCES

- Ait-Azzouzene, D., L. Verkoczy, J. Peters, A. Gavin, P. Skog, J.L. Vela, and D. Nemazee. 2005. An immunoglobulin C $\kappa$ -reactive single chain antibody fusion protein induces tolerance through receptor editing in a normal polyclonal immune system. *J. Exp. Med.* 201:817–828. <http://dx.doi.org/10.1084/jem.20041854>
- Ait-Azzouzene, D., L. Verkoczy, B. Duong, P. Skog, A.L. Gavin, and D. Nemazee. 2006. Split tolerance in peripheral B cell subsets in mice expressing a low level of I $\kappa$ g $\kappa$ -reactive ligand. *J. Immunol.* 176:939–948.
- Allman, D., R.C. Lindsley, W. DeMuth, K. Rudd, S.A. Shinton, and R.R. Hardy. 2001. Resolution of three nonproliferative immature splenic B cell subsets reveals multiple selection points during peripheral B cell maturation. *J. Immunol.* 167:6834–6840.
- Batten, M., J. Groom, T.G. Cachero, F. Qian, P. Schneider, J. Tschopp, J.L. Browning, and F. Mackay. 2000. BAFF mediates survival of peripheral immature B lymphocytes. *J. Exp. Med.* 192:1453–1466. <http://dx.doi.org/10.1084/jem.192.10.1453>
- Benschop, R.J., K. Aviszus, X. Zhang, T. Manser, J.C. Cambier, and L.J. Wysocki. 2001. Activation and anergy in bone marrow B cells of a novel immunoglobulin transgenic mouse that is both hapten specific and autoreactive. *Immunity.* 14:33–43. [http://dx.doi.org/10.1016/S1074-7613\(01\)00087-5](http://dx.doi.org/10.1016/S1074-7613(01)00087-5)
- Brard, F., M. Shannon, E.L. Prak, S. Litwin, and M. Weigert. 1999. Somatic mutation and light chain rearrangement generate autoimmunity in anti-single-stranded DNA transgenic MRL/lpr mice. *J. Exp. Med.* 190:691–704. <http://dx.doi.org/10.1084/jem.190.5.691>
- Casetti, R., G. Köhler, and M.C. Lamers. 1995. Transitional B cells are the target of negative selection in the B cell compartment. *J. Exp. Med.* 181:2129–2140. <http://dx.doi.org/10.1084/jem.181.6.2129>
- Casellas, R., T.A. Shih, M. Kleinewietfeld, J. Rakonjac, D. Nemazee, K. Rajewsky, and M.C. Nussenzweig. 2001. Contribution of receptor editing to the antibody repertoire. *Science.* 291:1541–1544. <http://dx.doi.org/10.1126/science.1056600>
- Casellas, R., M. Jankovic, G. Meyer, A. Gazumyan, Y. Luo, R. Roeder, and M. Nussenzweig. 2002. OcaB is required for normal transcription and V(D)J recombination of a subset of immunoglobulin kappa genes. *Cell.* 110:575–585. [http://dx.doi.org/10.1016/S0092-8674\(02\)00911-X](http://dx.doi.org/10.1016/S0092-8674(02)00911-X)
- Casellas, R., Q. Zhang, N.Y. Zheng, M.D. Mathias, K. Smith, and P.C. Wilson. 2007. I $\kappa$ g $\kappa$  allelic inclusion is a consequence of receptor editing. *J. Exp. Med.* 204:153–160. <http://dx.doi.org/10.1084/jem.20061918>
- Chen, C., E.L. Prak, and M. Weigert. 1997. Editing disease-associated autoantibodies. *Immunity.* 6:97–105. [http://dx.doi.org/10.1016/S1074-7613\(00\)80673-1](http://dx.doi.org/10.1016/S1074-7613(00)80673-1)
- Chen, C., H. Li, Q. Tian, M. Beardall, Y. Xu, N. Casanova, and M. Weigert. 2006. Selection of anti-double-stranded DNA B cells in autoimmune MRL-lpr/lpr mice. *J. Immunol.* 176:5183–5190.
- Chung, J.B., M. Silverman, and J.G. Monroe. 2003. Transitional B cells: step by step towards immune competence. *Trends Immunol.* 24:342–349. [http://dx.doi.org/10.1016/S1471-4906\(03\)00119-4](http://dx.doi.org/10.1016/S1471-4906(03)00119-4)
- Craxton, A., K.E. Draves, A. Gruppi, and E.A. Clark. 2005. BAFF regulates B cell survival by downregulating the BH3-only family member Bim via the ERK pathway. *J. Exp. Med.* 202:1363–1374. <http://dx.doi.org/10.1084/jem.20051283>
- Duong, B.H., T. Ota, D. Ait-Azzouzene, M. Aoki-Ota, J.L. Vela, C. Huber, K. Walsh, A.L. Gavin, and D. Nemazee. 2010. Peripheral B cell tolerance and function in transgenic mice expressing an I $\kappa$ D superantigen. *J. Immunol.* 184:4143–4158. <http://dx.doi.org/10.4049/jimmunol.0903564>
- Duty, J.A., P. Szodoray, N.Y. Zheng, K.A. Koelsch, Q. Zhang, M. Swiatkowski, M. Mathias, L. Garman, C. Helms, B. Nakken, et al. 2009. Functional anergy in a subpopulation of naive B cells from healthy humans that express autoreactive immunoglobulin receptors. *J. Exp. Med.* 206:139–151. <http://dx.doi.org/10.1084/jem.20080611>
- Erikson, J., M.Z. Radic, S.A. Camper, R.R. Hardy, C. Carmack, and M. Weigert. 1991. Expression of anti-DNA immunoglobulin transgenes in non-autoimmune mice. *Nature.* 349:331–334. <http://dx.doi.org/10.1038/349331a0>
- Fulcher, D.A., A.B. Lyons, S.L. Korn, M.C. Cook, C. Koleda, C. Parish, B. Fazekas de St Groth, and A. Basten. 1996. The fate of self-reactive B cells depends primarily on the degree of antigen receptor engagement and availability of T cell help. *J. Exp. Med.* 183:2313–2328. <http://dx.doi.org/10.1084/jem.183.5.2313>
- Gärtner, F., F.W. Alt, R.J. Monroe, and K.J. Seidl. 2000. Antigen-independent appearance of recombination activating gene (RAG)-positive bone marrow B cells in the spleens of immunized mice. *J. Exp. Med.* 192:1745–1754. <http://dx.doi.org/10.1084/jem.192.12.1745>
- Gay, D., T. Saunders, S. Camper, and M. Weigert. 1993. Receptor editing: an approach by autoreactive B cells to escape tolerance. *J. Exp. Med.* 177:999–1008. <http://dx.doi.org/10.1084/jem.177.4.999>
- Goodnow, C.C., J. Crosbie, S. Adelstein, T.B. Lavoie, S.J. Smith-Gill, R.A. Brink, H. Pritchard-Briscoe, J.S. Wotherspoon, R.H. Loblay, K. Raphael, et al. 1988. Altered immunoglobulin expression and functional silencing of self-reactive B lymphocytes in transgenic mice. *Nature.* 334:676–682. <http://dx.doi.org/10.1038/334676a0>
- Gu, H., D. Tarlinton, W. Müller, K. Rajewsky, and I. Förster. 1991. Most peripheral B cells in mice are ligand selected. *J. Exp. Med.* 173:1357–1371. <http://dx.doi.org/10.1084/jem.173.6.1357>
- Halverson, R., R.M. Torres, and R. Pelanda. 2004. Receptor editing is the main mechanism of B cell tolerance toward membrane antigens. *Nat. Immunol.* 5:645–650. <http://dx.doi.org/10.1038/ni1076>
- Hannum, L.G., D. Ni, A.M. Haberman, M.G. Weigert, and M.J. Shlomchik. 1996. A disease-related rheumatoid factor autoantibody is not tolerized in a normal mouse: implications for the origins of autoantibodies in autoimmune disease. *J. Exp. Med.* 184:1269–1278. <http://dx.doi.org/10.1084/jem.184.4.1269>
- Hartley, S.B., J. Crosbie, R. Brink, A.B. Kantor, A. Basten, and C.C. Goodnow. 1991. Elimination from peripheral lymphoid tissues of self-reactive B lymphocytes recognizing membrane-bound antigens. *Nature.* 353:765–769. <http://dx.doi.org/10.1038/353765a0>
- Hsu, B.L., S.M. Harless, R.C. Lindsley, D.M. Hilbert, and M.P. Cancro. 2002. Cutting edge: BlyS enables survival of transitional and mature B cells through distinct mediators. *J. Immunol.* 168:5993–5996.
- Huang, H., J.F. Kearney, M.J. Grusby, C. Benoist, and D. Mathis. 2006. Induction of tolerance in arthritogenic B cells with receptors of differing affinity for self-antigen. *Proc. Natl. Acad. Sci. USA.* 103:3734–3739. <http://dx.doi.org/10.1073/pnas.0600214103>



- Ippolito, G.C., R.L. Schelonka, M. Zemlin, I.I. Ivanov, R. Kobayashi, C. Zemlin, G.L. Gartland, L. Nitschke, J. Pelkonen, K. Fujihashi, et al. 2006. Forced usage of positively charged amino acids in immunoglobulin CDR-H3 impairs B cell development and antibody production. *J. Exp. Med.* 203:1567–1578. <http://dx.doi.org/10.1084/jem.20052217>
- Isnardi, I., Y.S. Ng, L. Menard, G. Meyers, D. Saadoun, I. Srdanovic, J. Samuels, J. Berman, J.H. Buckner, C. Cunningham-Rundles, and E. Meffre. 2010. Complement receptor 2/CD21- human naive B cells contain mostly autoreactive unresponsive clones. *Blood.* 115:5026–5036. <http://dx.doi.org/10.1182/blood-2009-09-243071>
- Kench, J.A., D.M. Russell, and D. Nemazee. 1998. Efficient peripheral clonal elimination of B lymphocytes in MRL/lpr mice bearing autoantibody transgenes. *J. Exp. Med.* 188:909–917. <http://dx.doi.org/10.1084/jem.188.5.909>
- Kenny, J.J., A. Lustig, and D.L. Longo. 2000. Positive selection of low affinity autoreactive B cells. *Curr. Top. Microbiol. Immunol.* 252:39–45. [http://dx.doi.org/10.1007/978-3-642-57284-5\\_5](http://dx.doi.org/10.1007/978-3-642-57284-5_5)
- Kindt, T.J., and J.D. Capra. 1984. *The Antibody Enigma*. Plenum Press, New York. 270 pp.
- Lang, J., M. Jackson, L. Teyton, A. Brunmark, K. Kane, and D. Nemazee. 1996. B cells are exquisitely sensitive to central tolerance and receptor editing induced by ultralow affinity, membrane-bound antigen. *J. Exp. Med.* 184:1685–1697. <http://dx.doi.org/10.1084/jem.184.5.1685>
- Lang, J., B. Arnold, G. Hammerling, A.W. Harris, S. Korsmeyer, D. Russell, A. Strasser, and D. Nemazee. 1997. Enforced Bcl-2 expression inhibits antigen-mediated clonal elimination of peripheral B cells in an antigen dose-dependent manner and promotes receptor editing in autoreactive, immature B cells. *J. Exp. Med.* 186:1513–1522. <http://dx.doi.org/10.1084/jem.186.9.1513>
- Levine, M.H., A.M. Haberman, D.B. Sant'Angelo, L.G. Hannum, M.P. Cancro, C.A. Janeway Jr., and M.J. Shlomchik. 2000. A B-cell receptor-specific selection step governs immature to mature B cell differentiation. *Proc. Natl. Acad. Sci. USA.* 97:2743–2748. <http://dx.doi.org/10.1073/pnas.050552997>
- Li, H., Y. Jiang, E.L. Prak, M. Radic, and M. Weigert. 2001. Editors and editing of anti-DNA receptors. *Immunity.* 15:947–957. [http://dx.doi.org/10.1016/S1074-7613\(01\)00251-5](http://dx.doi.org/10.1016/S1074-7613(01)00251-5)
- Li, Y., H. Li, and M. Weigert. 2002. Autoreactive B cells in the marginal zone that express dual receptors. *J. Exp. Med.* 195:181–188. <http://dx.doi.org/10.1084/jem.20011453>
- Liu, S., M.G. Velez, J. Humann, S. Rowland, F.J. Conrad, R. Halverson, R.M. Torres, and R. Pelanda. 2005. Receptor editing can lead to allelic inclusion and development of B cells that retain antibodies reacting with high avidity autoantigens. *J. Immunol.* 175:5067–5076.
- Mandik-Nayak, L., S. Seo, A. Eaton-Bassiri, D. Allman, R.R. Hardy, and J. Erikson. 2000. Functional consequences of the developmental arrest and follicular exclusion of anti-double-stranded DNA B cells. *J. Immunol.* 164:1161–1168.
- Martin, F., and J.F. Kearney. 2001. B1 cells: similarities and differences with other B cell subsets. *Curr. Opin. Immunol.* 13:195–201. [http://dx.doi.org/10.1016/S0952-7915\(00\)00204-1](http://dx.doi.org/10.1016/S0952-7915(00)00204-1)
- Melamed, D., and D. Nemazee. 1997. Self-antigen does not accelerate immature B cell apoptosis, but stimulates receptor editing as a consequence of developmental arrest. *Proc. Natl. Acad. Sci. USA.* 94:9267–9272. <http://dx.doi.org/10.1073/pnas.94.17.9267>
- Meng, W., L. Yunk, L.S. Wang, A. Maganty, E. Xue, P.L. Cohen, R.A. Eisenberg, M.G. Weigert, S.J. Mancini, and E.T. Prak. 2011. Selection of individual VH genes occurs at the pro-B to pre-B cell transition. *J. Immunol.* 187:1835–1844. <http://dx.doi.org/10.4049/jimmunol.1100207>
- Merrell, K.T., R.J. Benschop, S.B. Gauld, K. Aviszus, D. Decote-Ricardo, L.J. Wysocki, and J.C. Cambier. 2006. Identification of anergic B cells within a wild-type repertoire. *Immunity.* 25:953–962. <http://dx.doi.org/10.1016/j.immuni.2006.10.017>
- Meyer-Bahlburg, A., S.F. Andrews, K.O. Yu, S.A. Porcelli, and D.J. Rawlings. 2008. Characterization of a late transitional B cell population highly sensitive to BAFF-mediated homeostatic proliferation. *J. Exp. Med.* 205:155–168. <http://dx.doi.org/10.1084/jem.20071088>
- Nemazee, D. 2006. Receptor editing in lymphocyte development and central tolerance. *Nat. Rev. Immunol.* 6:728–740. <http://dx.doi.org/10.1038/nri1939>
- Nemazee, D.A., and K. Bürki. 1989. Clonal deletion of B lymphocytes in a transgenic mouse bearing anti-MHC class I antibody genes. *Nature.* 337:562–566. <http://dx.doi.org/10.1038/337562a0>
- Norvell, A., L. Mandik, and J.G. Monroe. 1995. Engagement of the antigen-receptor on immature murine B lymphocytes results in death by apoptosis. *J. Immunol.* 154:4404–4413.
- Nossal, G.J. 1983. Cellular mechanisms of immunologic tolerance. *Annu. Rev. Immunol.* 1:33–62. <http://dx.doi.org/10.1146/annurev.iv.01.040183.000341>
- Ota, M., B.H. Duong, A. Torkamani, C.M. Doyle, A.L. Gavin, T. Ota, and D. Nemazee. 2010. Regulation of the B cell receptor repertoire and self-reactivity by BAFF. *J. Immunol.* 185:4128–4136. <http://dx.doi.org/10.4049/jimmunol.1002176>
- Ota, T., M. Ota, B.H. Duong, A.L. Gavin, and D. Nemazee. 2011. Liver-expressed I $\mu$ g superantigen induces tolerance of polyclonal B cells by clonal deletion not  $\kappa$  to  $\lambda$  receptor editing. *J. Exp. Med.* 208:617–629. <http://dx.doi.org/10.1084/jem.20102265>
- Panigrahi, A.K., N.G. Goodman, R.A. Eisenberg, M.R. Rickels, A. Naji, and E.T. Luning Prak. 2008. RS rearrangement frequency as a marker of receptor editing in lupus and type 1 diabetes. *J. Exp. Med.* 205:2985–2994. <http://dx.doi.org/10.1084/jem.20082053>
- Prak, E.L., and M. Weigert. 1995. Light chain replacement: a new model for antibody gene rearrangement. *J. Exp. Med.* 182:541–548. <http://dx.doi.org/10.1084/jem.182.2.541>
- Radic, M.Z., M.A. Mascelli, J. Erikson, H. Shan, and M. Weigert. 1991. Ig H and L chain contributions to autoimmune specificities. *J. Immunol.* 146:176–182.
- Radic, M.Z., J. Erikson, S. Litwin, and M. Weigert. 1993. B lymphocytes may escape tolerance by revising their antigen receptors. *J. Exp. Med.* 177:1165–1173. <http://dx.doi.org/10.1084/jem.177.4.1165>
- Rathmell, J.C., and C.C. Goodnow. 1994. Effects of the lpr mutation on elimination and inactivation of self-reactive B cells. *J. Immunol.* 153:2831–2842.
- Retter, M.W., and D. Nemazee. 1998. Receptor editing occurs frequently during normal B cell development. *J. Exp. Med.* 188:1231–1238. <http://dx.doi.org/10.1084/jem.188.7.1231>
- Rubio, C.F., J. Kench, D.M. Russell, R. Yawger, and D. Nemazee. 1996. Analysis of central B cell tolerance in autoimmune-prone MRL/lpr mice bearing autoantibody transgenes. *J. Immunol.* 157:65–71.
- Russell, D.M., Z. Dembić, G. Morahan, J.F. Miller, K. Bürki, and D. Nemazee. 1991. Peripheral deletion of self-reactive B cells. *Nature.* 354:308–311. <http://dx.doi.org/10.1038/354308a0>
- Santulli-Marotto, S., M.W. Retter, R. Gee, M.J. Mamula, and S.H. Clarke. 1998. Autoreactive B cell regulation: peripheral induction of developmental arrest by lupus-associated autoantigens. *Immunity.* 8:209–219. [http://dx.doi.org/10.1016/S1074-7613\(00\)80473-2](http://dx.doi.org/10.1016/S1074-7613(00)80473-2)
- Schelonka, R.L., M. Zemlin, R. Kobayashi, G.C. Ippolito, Y. Zhuang, G.L. Gartland, A. Szalai, K. Fujihashi, K. Rajewsky, and H.W. Schroeder Jr. 2008. Preferential use of DH reading frame 2 alters B cell development and antigen-specific antibody production. *J. Immunol.* 181:8409–8415.
- Schiemann, B., J.L. Gommerman, K. Vora, T.G. Cachero, S. Shulgarskaya, M. Dobles, E. Frew, and M.L. Scott. 2001. An essential role for BAFF in the normal development of B cells through a BCMA-independent pathway. *Science.* 293:2111–2114. <http://dx.doi.org/10.1126/science.1061964>
- Shlomchik, M.J. 2008. Sites and stages of autoreactive B cell activation and regulation. *Immunity.* 28:18–28. <http://dx.doi.org/10.1016/j.immuni.2007.12.004>
- Shlomchik, M.J., A.H. Aucocin, D.S. Pisetsky, and M.G. Weigert. 1987. Structure and function of anti-DNA autoantibodies derived from a single autoimmune mouse. *Proc. Natl. Acad. Sci. USA.* 84:9150–9154. <http://dx.doi.org/10.1073/pnas.84.24.9150>
- Shlomchik, M., M. Mascelli, H. Shan, M.Z. Radic, D. Pisetsky, A. Marshak-Rothstein, and M. Weigert. 1990. Anti-DNA antibodies from autoimmune mice arise by clonal expansion and somatic mutation. *J. Exp. Med.* 171:265–292. <http://dx.doi.org/10.1084/jem.171.1.265>
- Smith, K., L. Garman, J. Wrammert, N.Y. Zheng, J.D. Capra, R. Ahmed, and P.C. Wilson. 2009. Rapid generation of fully human monoclonal antibodies specific to a vaccinating antigen. *Nat. Protoc.* 4:372–384. <http://dx.doi.org/10.1038/nprot.2009.3>

- Tiegs, S.L., D.M. Russell, and D. Nemazee. 1993. Receptor editing in self-reactive bone marrow B cells. *J. Exp. Med.* 177:1009–1020. <http://dx.doi.org/10.1084/jem.177.4.1009>
- Velez, M.G., M. Kane, S. Liu, S.B. Gauld, J.C. Cambier, R.M. Torres, and R. Pelanda. 2007. Ig allotypic inclusion does not prevent B cell development or response. *J. Immunol.* 179:1049–1057.
- Wardemann, H., S. Yurasov, A. Schaefer, J.W. Young, E. Meffre, and M.C. Nussenzweig. 2003. Predominant autoantibody production by early human B cell precursors. *Science.* 301:1374–1377. <http://dx.doi.org/10.1126/science.1086907>
- Wardemann, H., J. Hammersen, and M.C. Nussenzweig. 2004. Human autoantibody silencing by immunoglobulin light chains. *J. Exp. Med.* 200:191–199. <http://dx.doi.org/10.1084/jem.20040818>
- Wrammert, J., K. Smith, J. Miller, W.A. Langley, K. Kokko, C. Larsen, N.Y. Zheng, I. Mays, L. Garman, C. Helms, et al. 2008. Rapid cloning of high-affinity human monoclonal antibodies against influenza virus. *Nature.* 453:667–671. <http://dx.doi.org/10.1038/nature06890>
- Yannoutsos, N., P. Wilson, W. Yu, H.T. Chen, A. Nussenzweig, H. Petrie, and M.C. Nussenzweig. 2001. The role of recombination activating gene (RAG) reinduction in thymocyte development in vivo. *J. Exp. Med.* 194:471–480. <http://dx.doi.org/10.1084/jem.194.4.471>
- Yu, W., H. Nagaoka, M. Jankovic, Z. Misulovin, H. Suh, A. Rolink, F. Melchers, E. Meffre, and M.C. Nussenzweig. 1999. Continued RAG expression in late stages of B cell development and no apparent re-induction after immunization. *Nature.* 400:682–687. <http://dx.doi.org/10.1038/23287>
- Zemlin, M., G.C. Ippolito, C. Zemlin, J. Link, M. Monestier, and H.W. Schroeder Jr. 2005. Adult lupus-prone MRL/MpJ2+ mice express a primary antibody repertoire that differs in CDR-H3 length distribution and hydrophobicity from that expressed in the C3H parental strain. *Mol. Immunol.* 42:789–798. <http://dx.doi.org/10.1016/j.molimm.2004.07.049>
- Zemlin, M., R.L. Schelonka, G.C. Ippolito, C. Zemlin, Y. Zhuang, G.L. Gartland, L. Nitschke, J. Pelkonen, K. Rajewsky, and H.W. Schroeder Jr. 2008. Regulation of repertoire development through genetic control of DH reading frame preference. *J. Immunol.* 181:8416–8424.